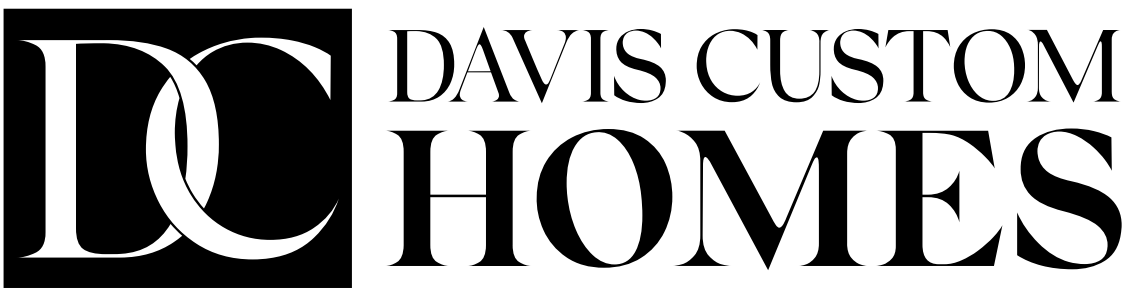


CONTEMPORARY CUSTOM RANCH



www.autodesk.com/revit



RIGHT SIDE BRAIN
designs

RSB Designs
drawings, plans, etc.
are the sole property
of RSB Designs and
may not be copied in
whole or part, printed
or otherwise
disseminated without
express written
permission of RSB
Designs.

Date	Description
07/ 27/	Draft 1
22 08/	Draft 2
15/ 22	Draft 3
08/ 21/	
22	

Square Footages	
Lower Level:	Approx. 1800 SF Finished
Main Level:	Approx. 2119 SF Finished

Garage:	Approx. 600 SF
---------	----------------

RSB Designs
Davis & Reed Homes
Elevations

Project Address/Name	Contemporary Ranch
Date	Updated 08/31/2022
Drawn by	Brit Borchending
Checked by	Checker

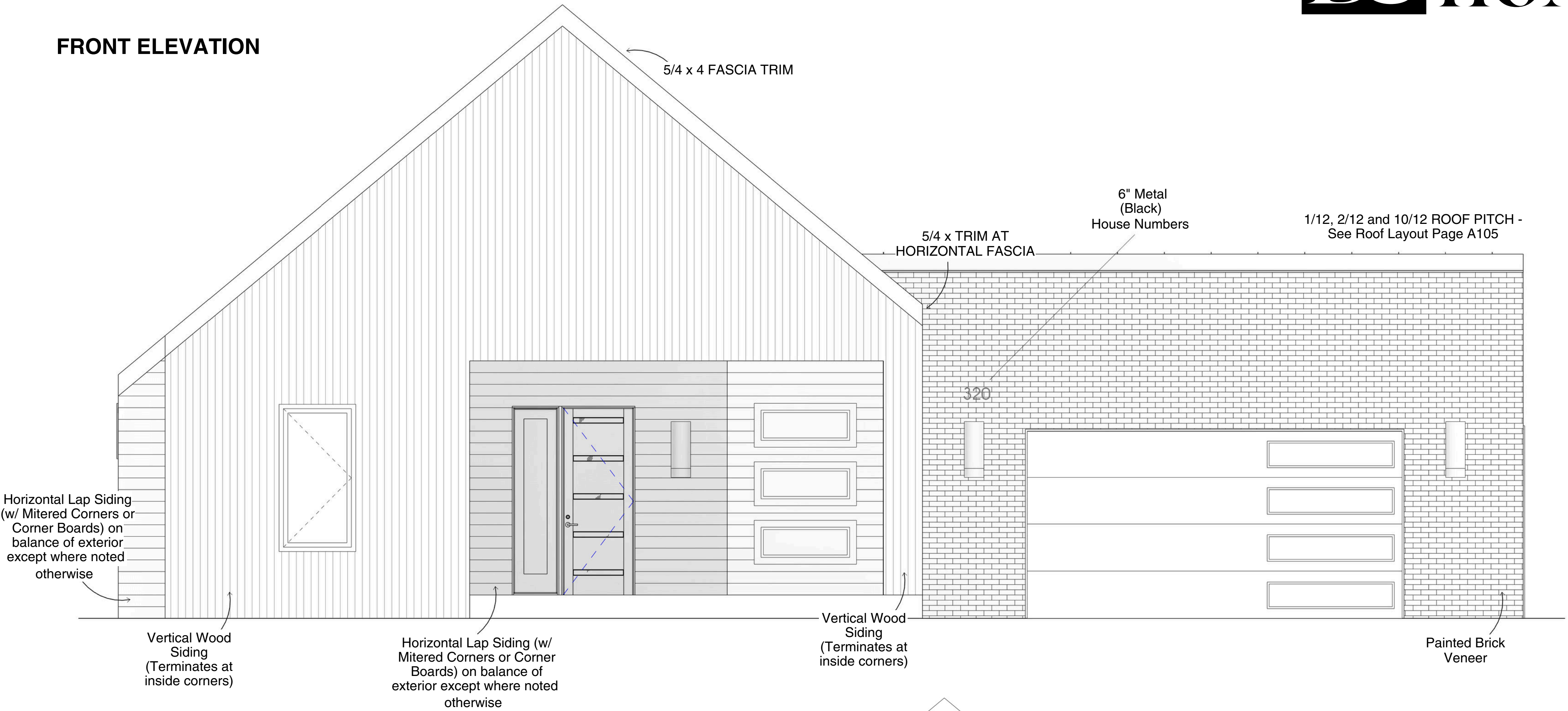
A101

Scale

This floor plan is for
informational purposes only.
The details including but not
limited to sizes and options
are subject to change and
should be independently
verified by the buyer with the
General Contractor.

Right Side Brain Designs
2405 6th Ave SW, Altoona
(515) 890-9951
www.RSBDesigns.com

FRONT ELEVATION

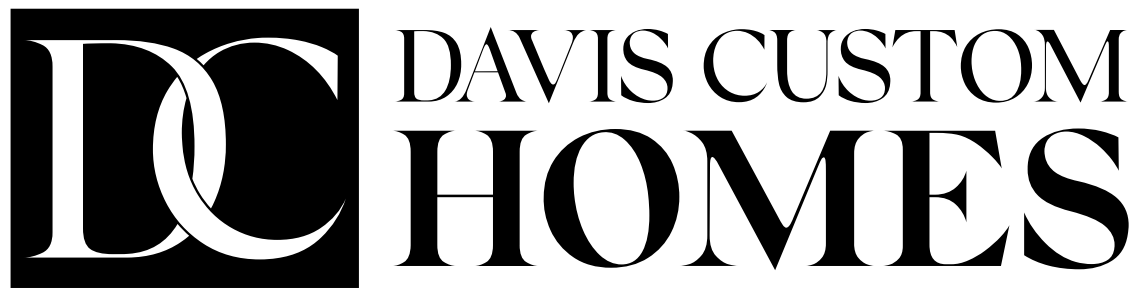


REAR ELEVATION



8" x 9' Full Foundation w/ Triple Plate
2x6 x 10' Main Floor Exterior Walls

CONTEMPORARY CUSTOM RANCH



www.autodesk.com/revit



RIGHT SIDE BRAIN
designs

RSB Designs
drawings, plans, etc.
are the sole property
of RSB Designs and
may not be copied in
whole or part, printed
or otherwise
disseminated without
express written
permission of RSB
Designs.

Date	Description
07/ 27/	Draft 1
22 08/	Draft 2
15/ 22	Draft 3
08/ 31/	
22	

Square Footages	
Lower Level:	Approx. 1800 SF Finished
Main Level:	Approx. 2119 SF Finished

Garage:	Approx. 600 SF
---------	----------------

RSB Designs
Davis & Reed Homes
Lower Level

Project Address/Name	Contemporary Ranch
Date	Updated 08/31/2022
Drawn by	Britt Borchending
Checked by	Checker

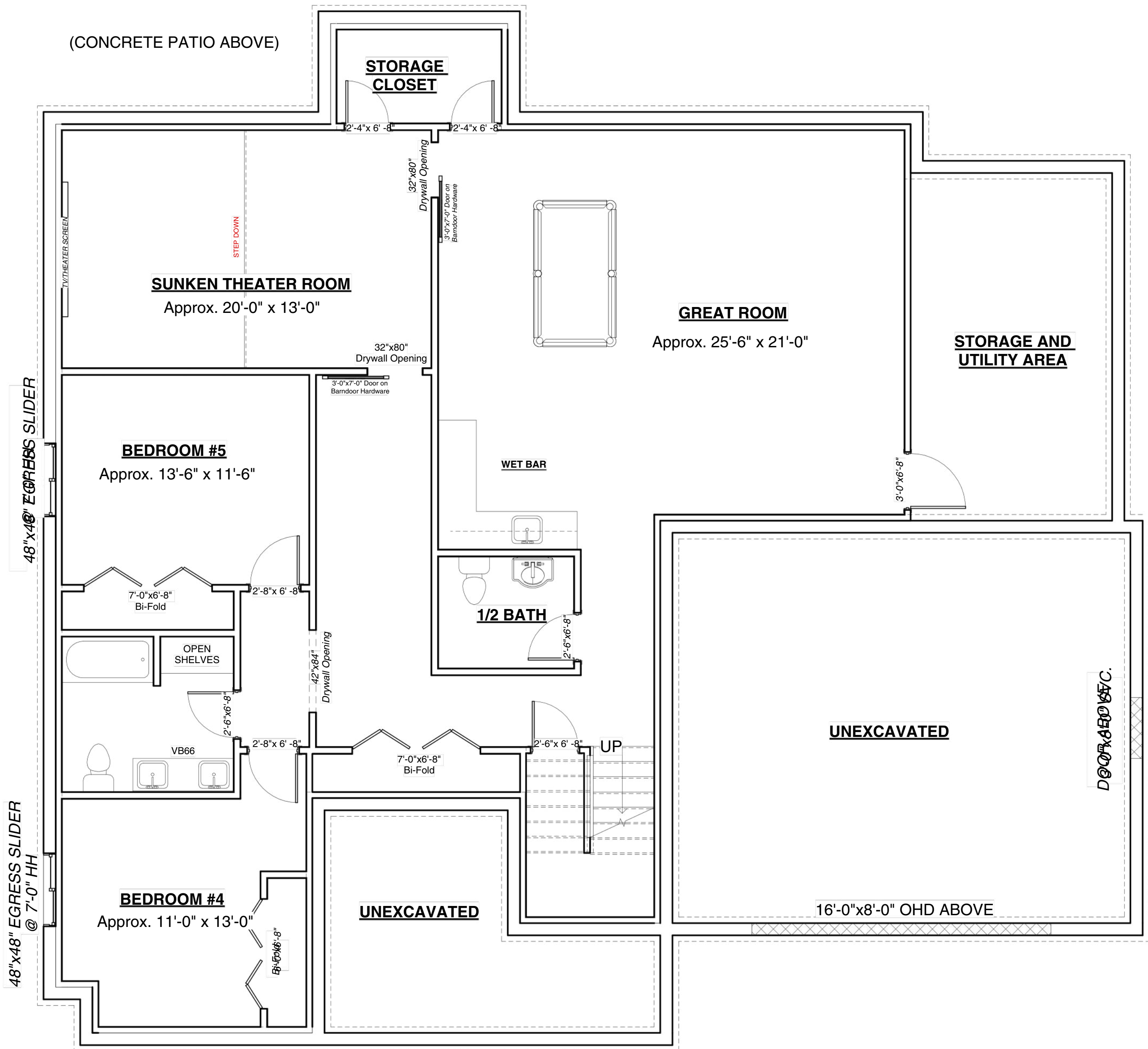
A102

Scale

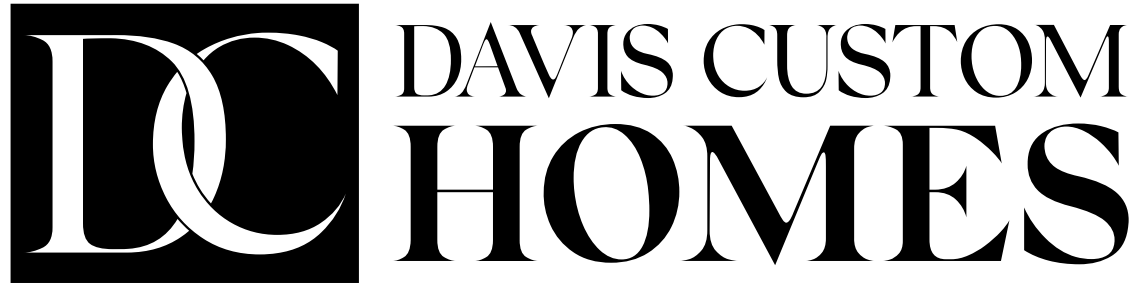
This floor plan is for
informational purposes only.
The details including but not
limited to sizes and options
are subject to change and
should be independently
verified by the buyer with the
General Contractor.

Right Side Brain Designs
2405 6th Ave SW, Altoona
(515) 890-9951
www.RSBDesigns.com

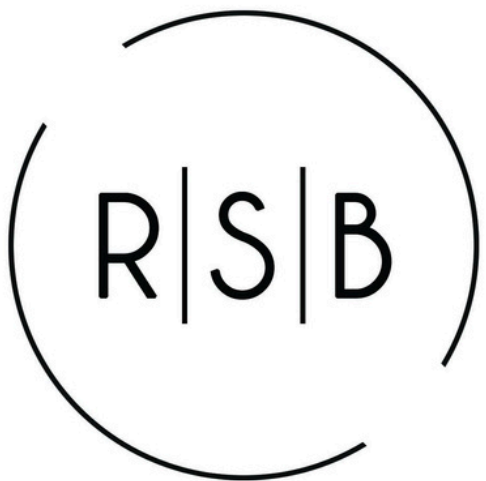
Lower Level



CONTEMPORARY CUSTOM RANCH



www.autodesk.com/revit



RIGHT SIDE BRAIN
designs

RSB Designs
drawings, plans, etc.
are the sole property
of RSB Designs and
may not be copied in
whole or part, printed
or otherwise
disseminated without
express written
permission of RSB
Designs.

Date	Description
07/ 27/	Draft 1
22/ 08/	Draft 2
15/ 22/	Draft 3
08/ 31/	
22/	

Square Footages	
Lower Level:	Approx. 1800 SF Finished
Main Level:	Approx. 2119 SF Finished
Garage:	Approx. 600 SF

RSB Designs Davis & Reed Homes Main Level

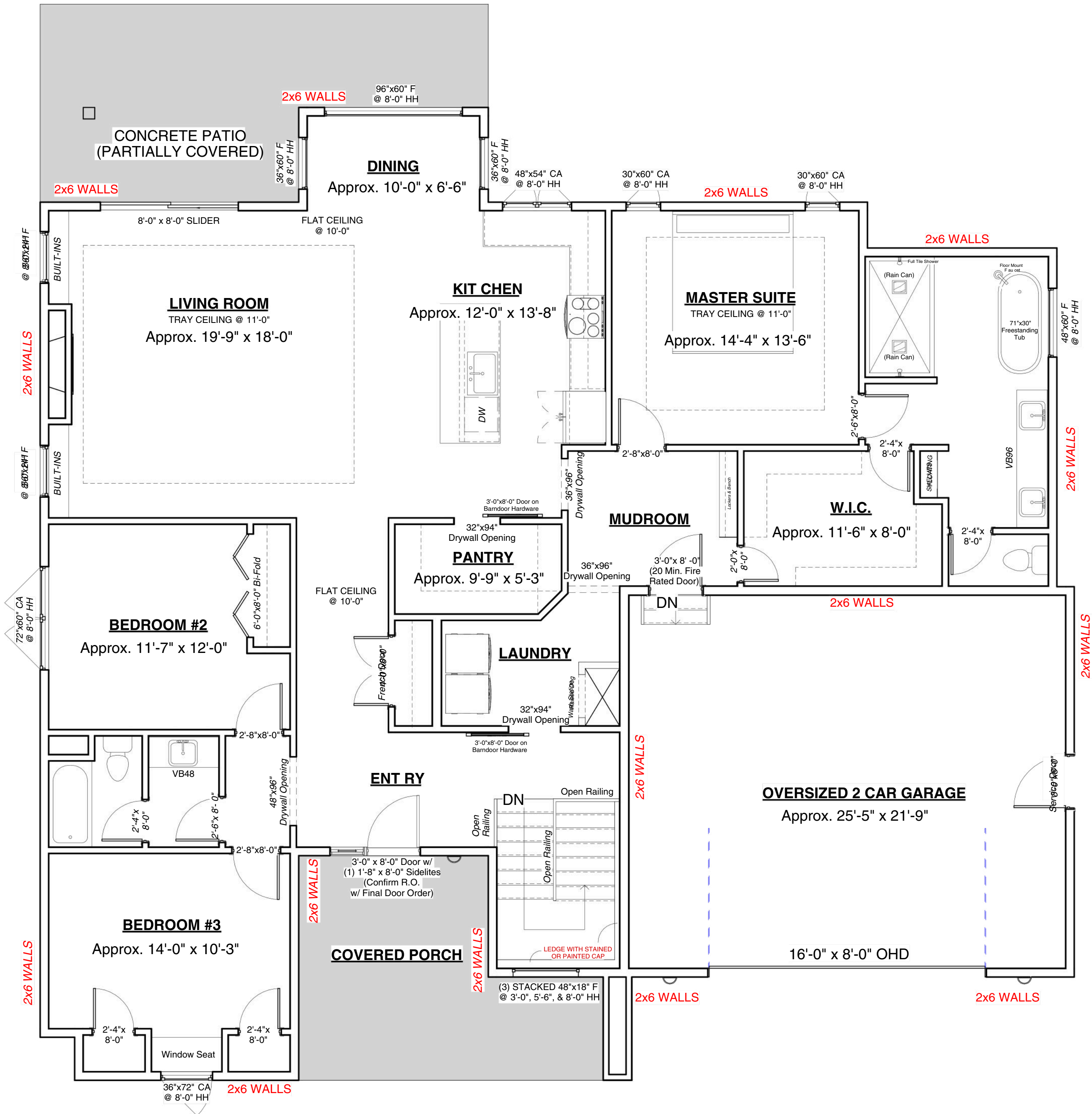
Project Address/Name	Contemporary Ranch
Date	Updated 08/31/2022
Drawn by	Britt Borcharding
Checked by	Checker

A104

This floor plan is for
informational purposes only.
The details including but not
limited to sizes and options
are subject to change and
should be independently
verified by the buyer with the
General Contractor.

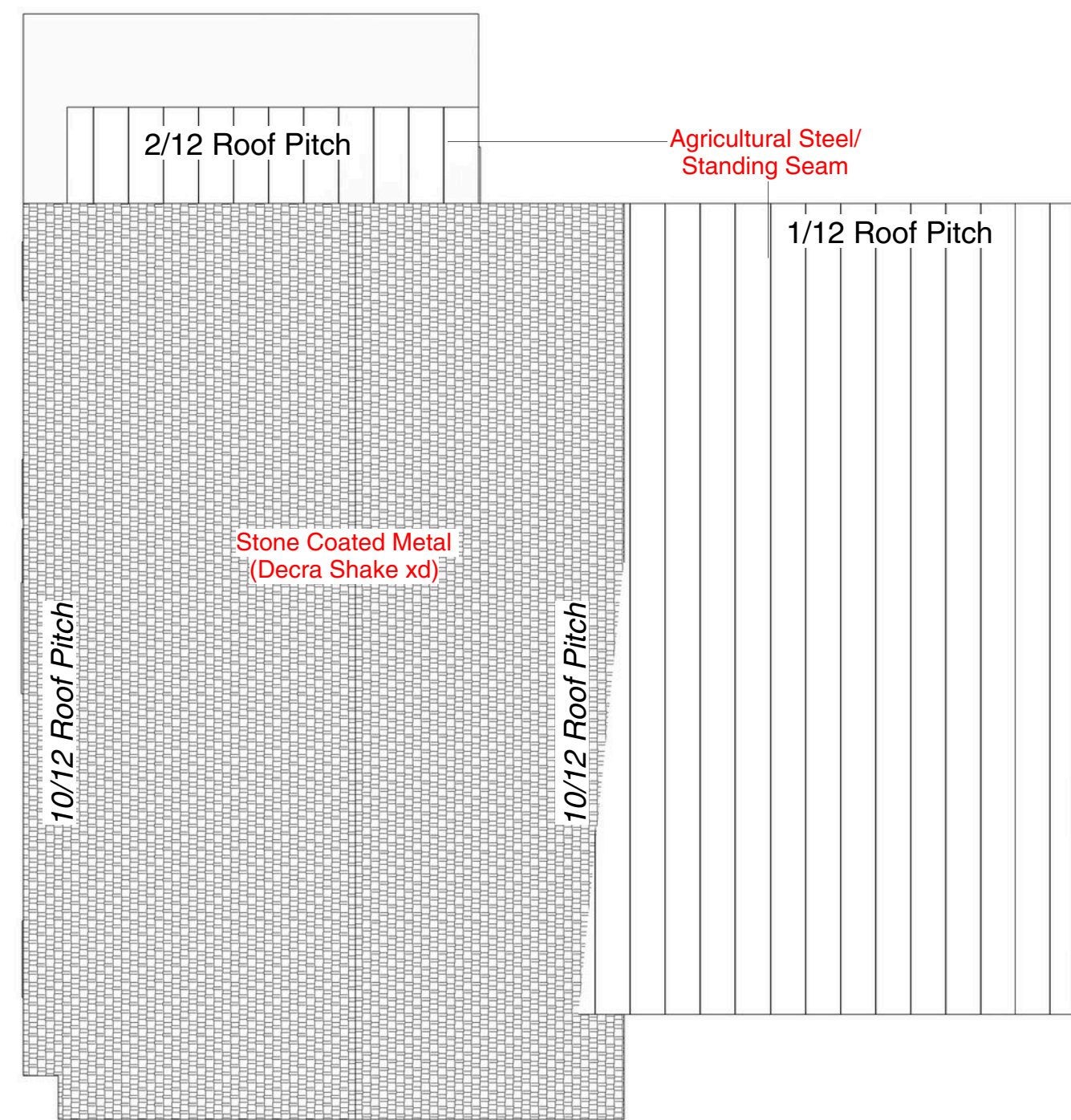
Right Side Brain Designs
2405 6th Ave SW, Altoona
(515) 890-9951
www.RSBDesigns.com

Main Level:

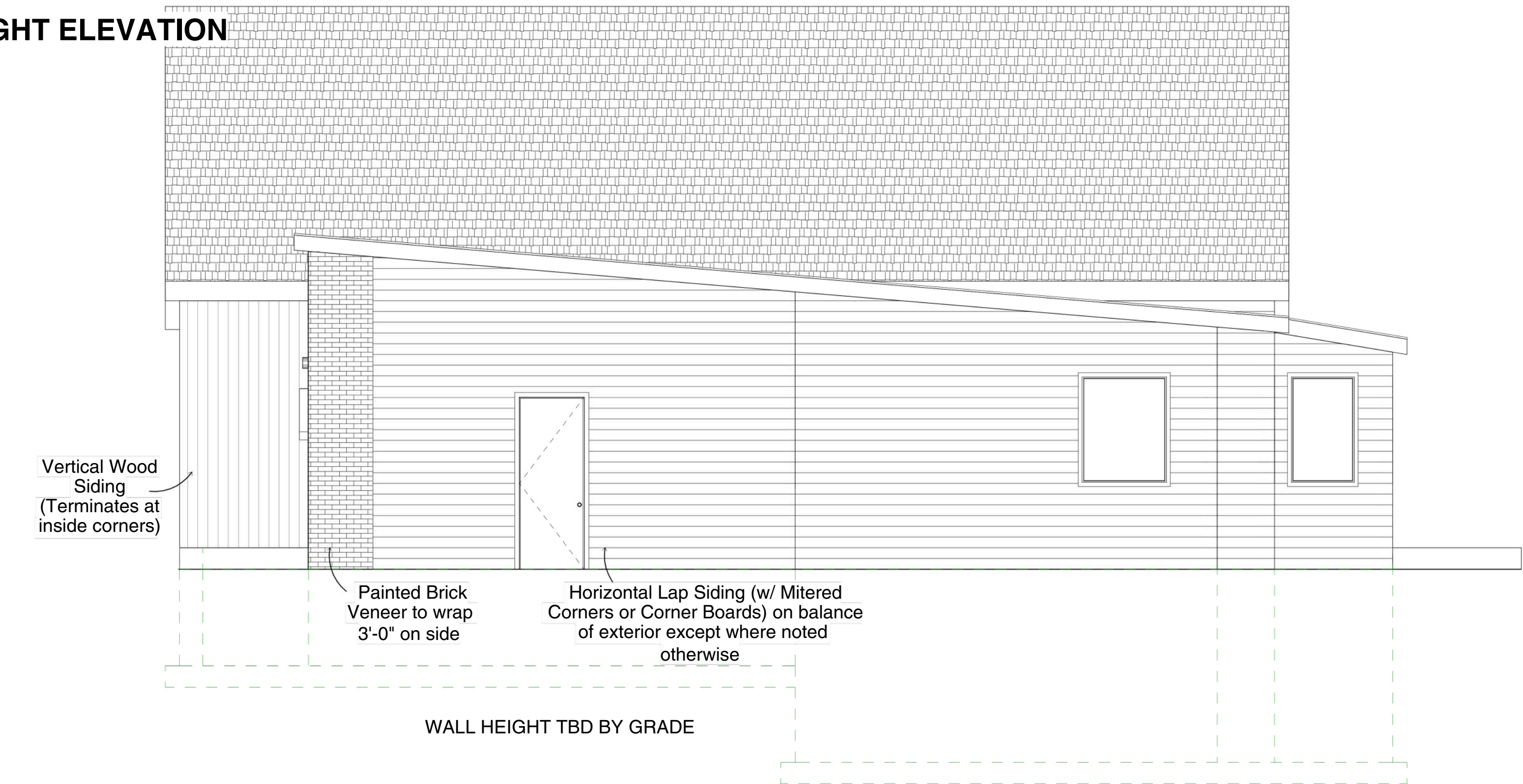


CONTEMPORARY CUSTOM RANCH

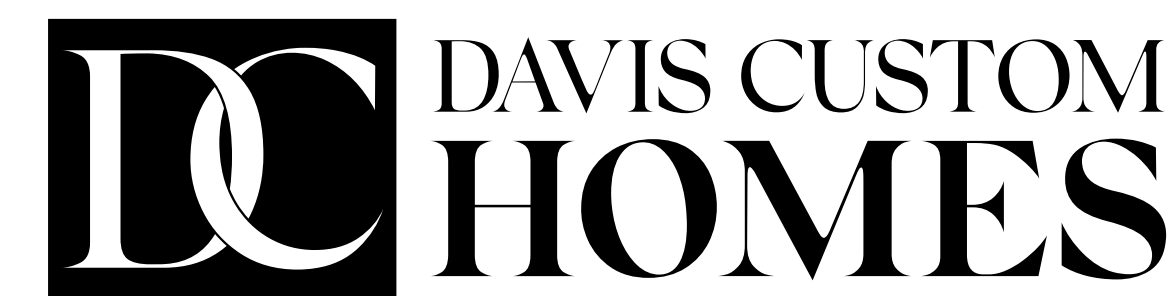
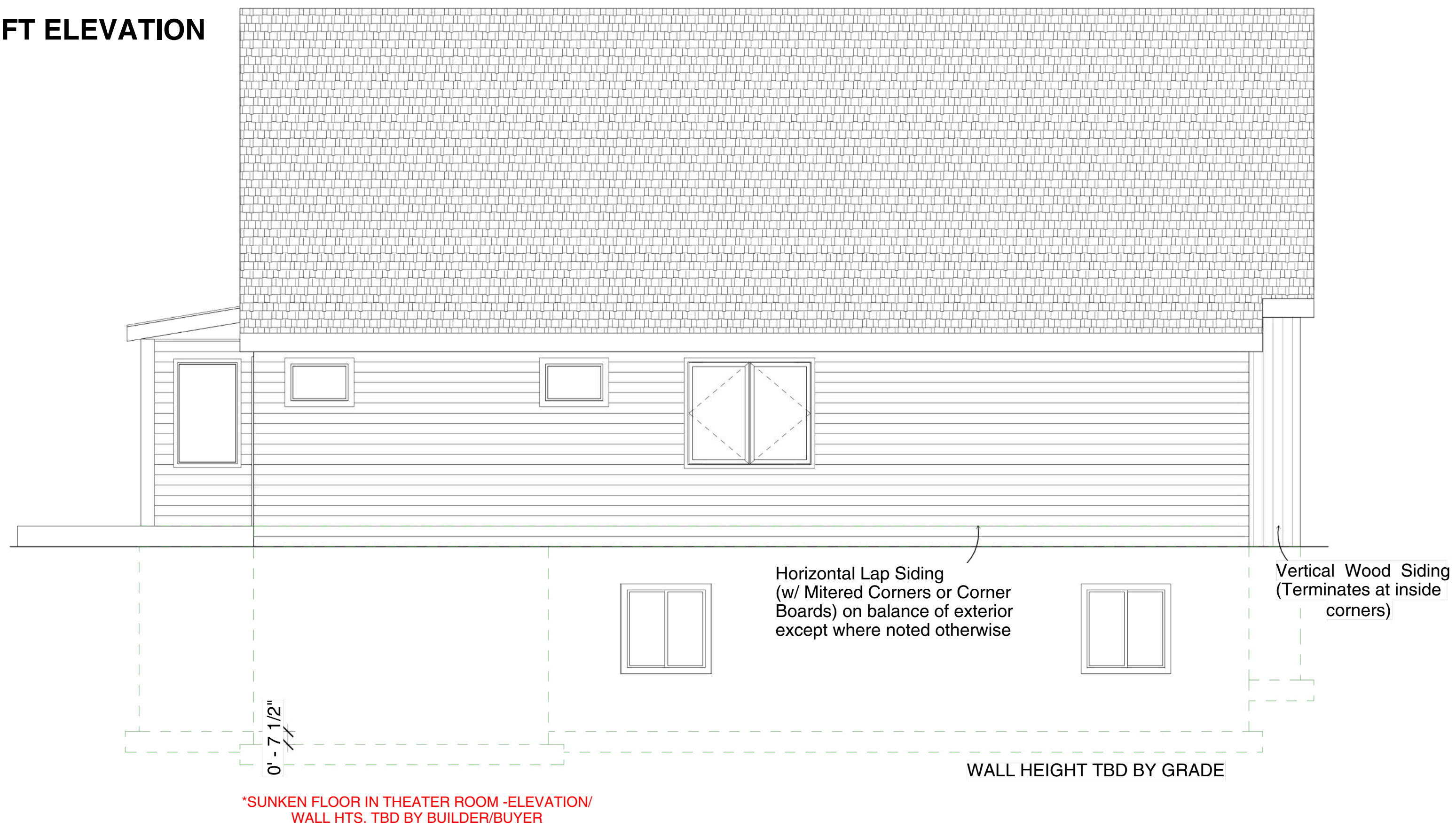
Roof Layout:



RIGHT ELEVATION



LEFT ELEVATION



www.autodesk.com/revit



RIGHT SIDE BRAIN
designs

RSB Designs
drawings, plans, etc.
are the sole property
of RSB Designs and
may not be copied in
whole or part, printed
or otherwise
disseminated without
express written
permission of RSB
Designs.

Date	Description
07/ 27/	Draft 1
22 08/	Draft 2
15/ 22	Draft 3
08/ 31/	
22	

Square Footages	
Lower Level:	Approx. 1800 SF Finished
Main Level:	Approx. 2119 SF Finished
Garage:	Approx. 600 SF

RSB Designs
Davis & Reed Homes
Elevations 2

Project Address/Name	Contemporary Ranch
Date	Updated 08/31/2022
Drawn by	Britt Borcharding
Checked by	Checker

A105

Scale

This floor plan is for
informational purposes only.
The details including but not
limited to sizes and options
are subject to change and
should be independently
verified by the buyer with the
General Contractor.

Right Side Brain Designs
2405 6th Ave SW, Altoona
(515) 890-9951
www.RSBDesigns.com