

1450 + 615 LOFT
BARNDOMINIUM PROJECT

REVIEW MODE



www.autodesk.com/revit



RIGHT SIDE BRAIN
designs

RSB Designs drawings, plans, etc. are the sole property of RSB Designs and may not be copied in whole or part, printed or otherwise disseminated without express written permission of RSB Designs.

Date	Description

RSB Designs
Davis & Reed

Main Level

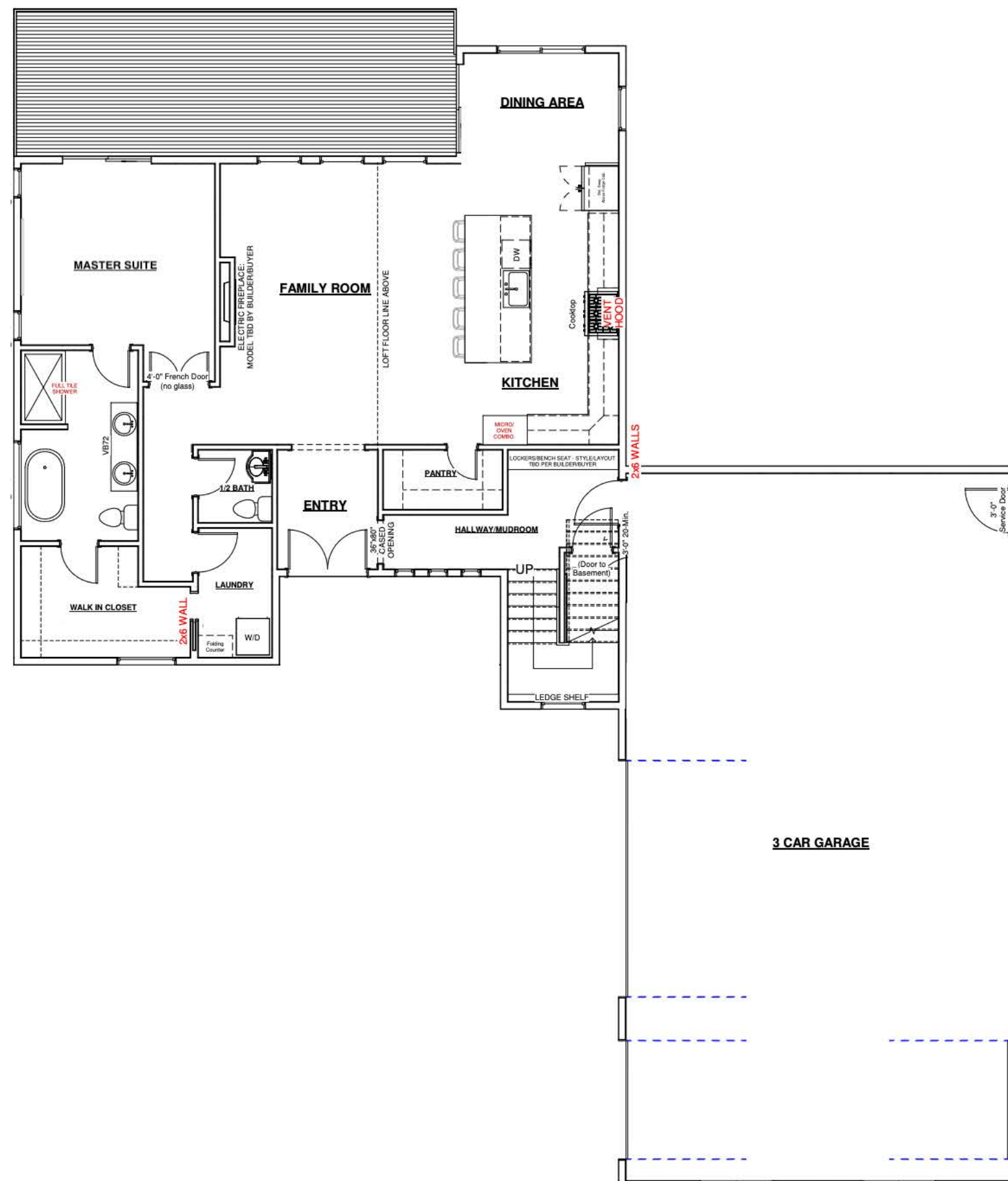
Project Address/Name	Custom
Date	REVIEW 06/28/2023
Drawn by	Bit Architecture
Checked by	

A102

This floor plan is for informational purposes only. The details including but not limited to sizes and options are subject to change and should be independently verified by the buyer with the General Contractor.

Right Side Brain Designs
2405 6th Ave SW, Altoona
(515) 890-9951
www.RSBDesigns.com

Main Level:

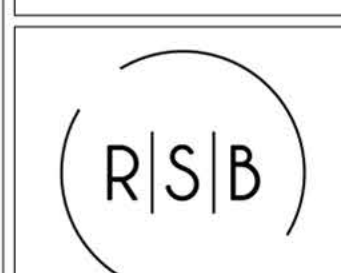


1450 + 615 LOFT
BARNDOMINIUM PROJECT

REVIEW MODE



www.autodesk.com/revit



RIGHT SIDE BRAIN
designs

RSB Designs drawings, plans, etc. are the sole property of RSB Designs and may not be copied in whole or part, printed or otherwise disseminated without express written permission of RSB Designs.

Date	Description

RSB Designs
Davis & Reed

Upper Loft Area

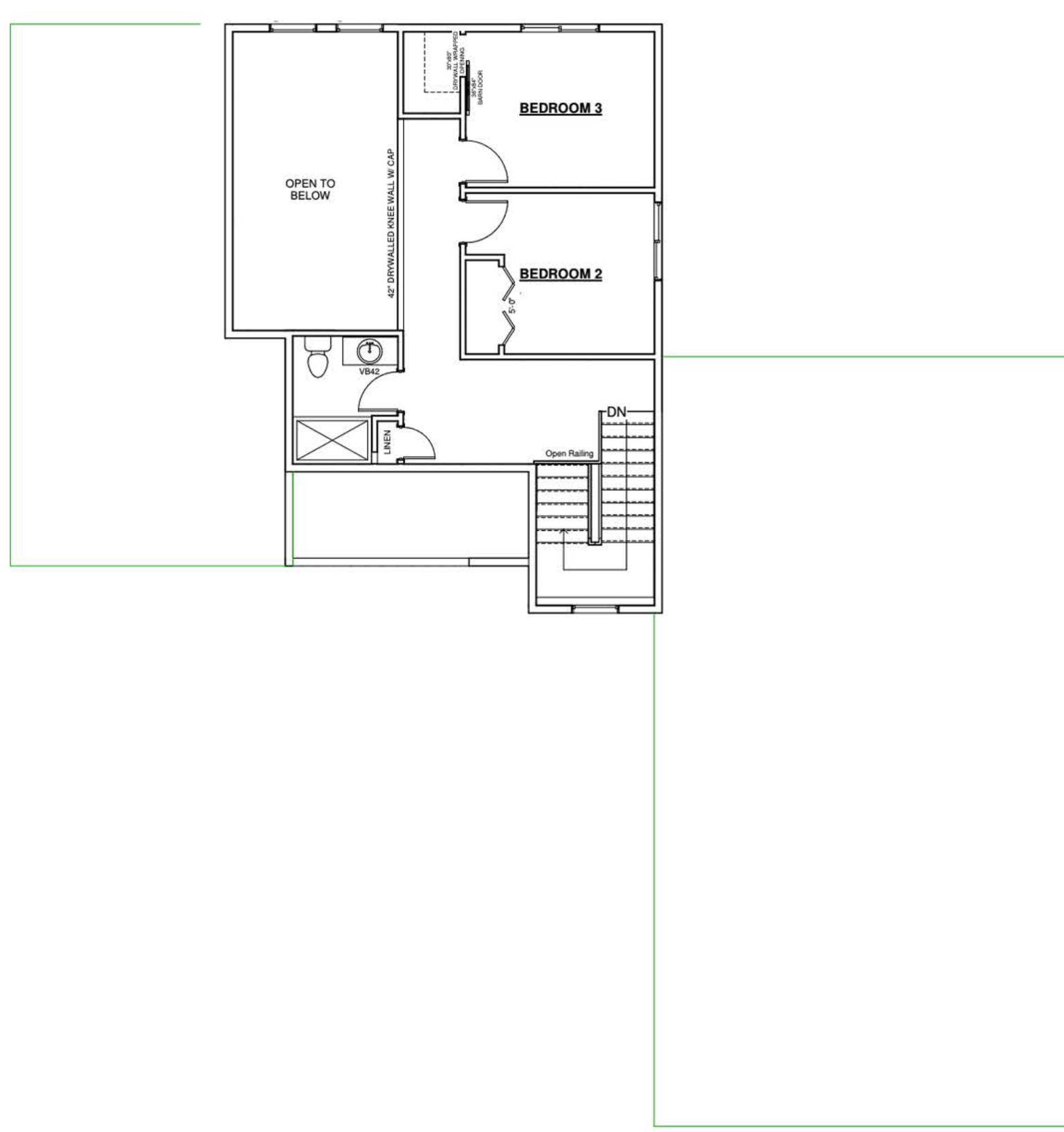
Project Address/Name	Custom
Date	REVIEW 06/28/2023
Drawn by	Bit Architecture
Checked by	

A103

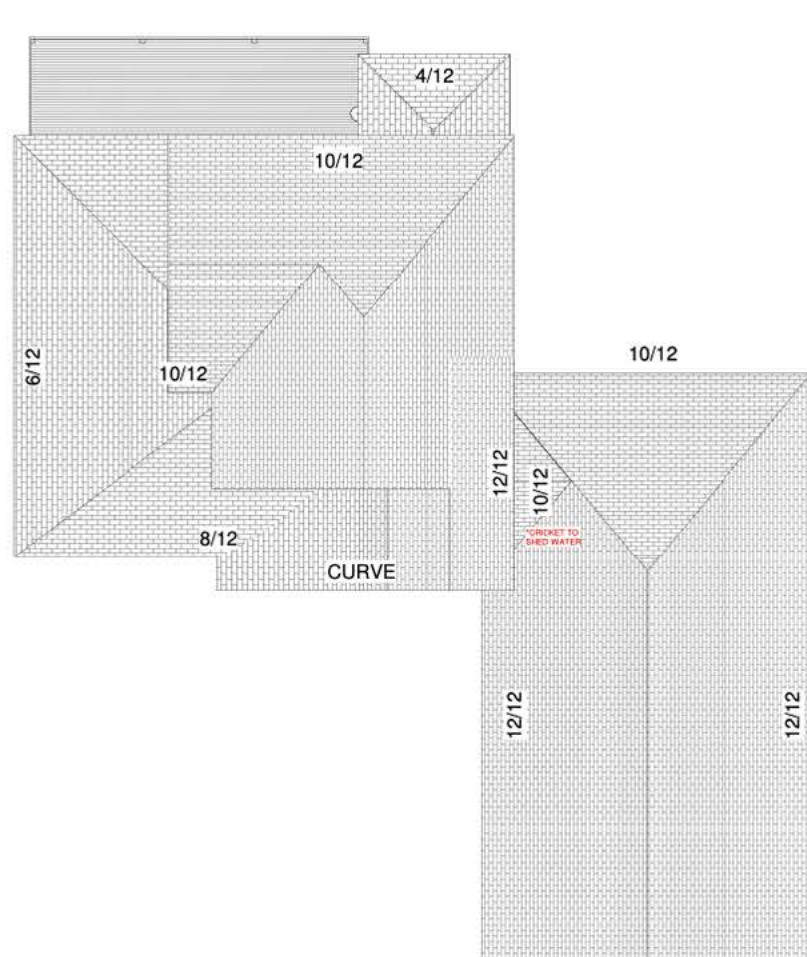
This floor plan is for informational purposes only. The details including but not limited to sizes and options are subject to change and should be independently verified by the buyer with the General Contractor.

Right Side Brain Designs
2405 6th Ave SW, Altoona
(515) 890-9951
www.RSBDesigns.com

Upper Level:



Roof Layout:

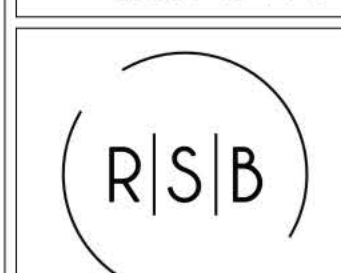


1450 + 615 LOFT
BARNDOMINIUM PROJECT

REVIEW MODE



www.autodesk.com/revit



RIGHT SIDE BRAIN
designs

RSB Designs drawings, plans, etc. are the sole property of RSB Designs and may not be copied in whole or part, printed or otherwise disseminated without express written permission of RSB Designs.

Date	Description

RSB Designs
Davis & Reed

Lower Level

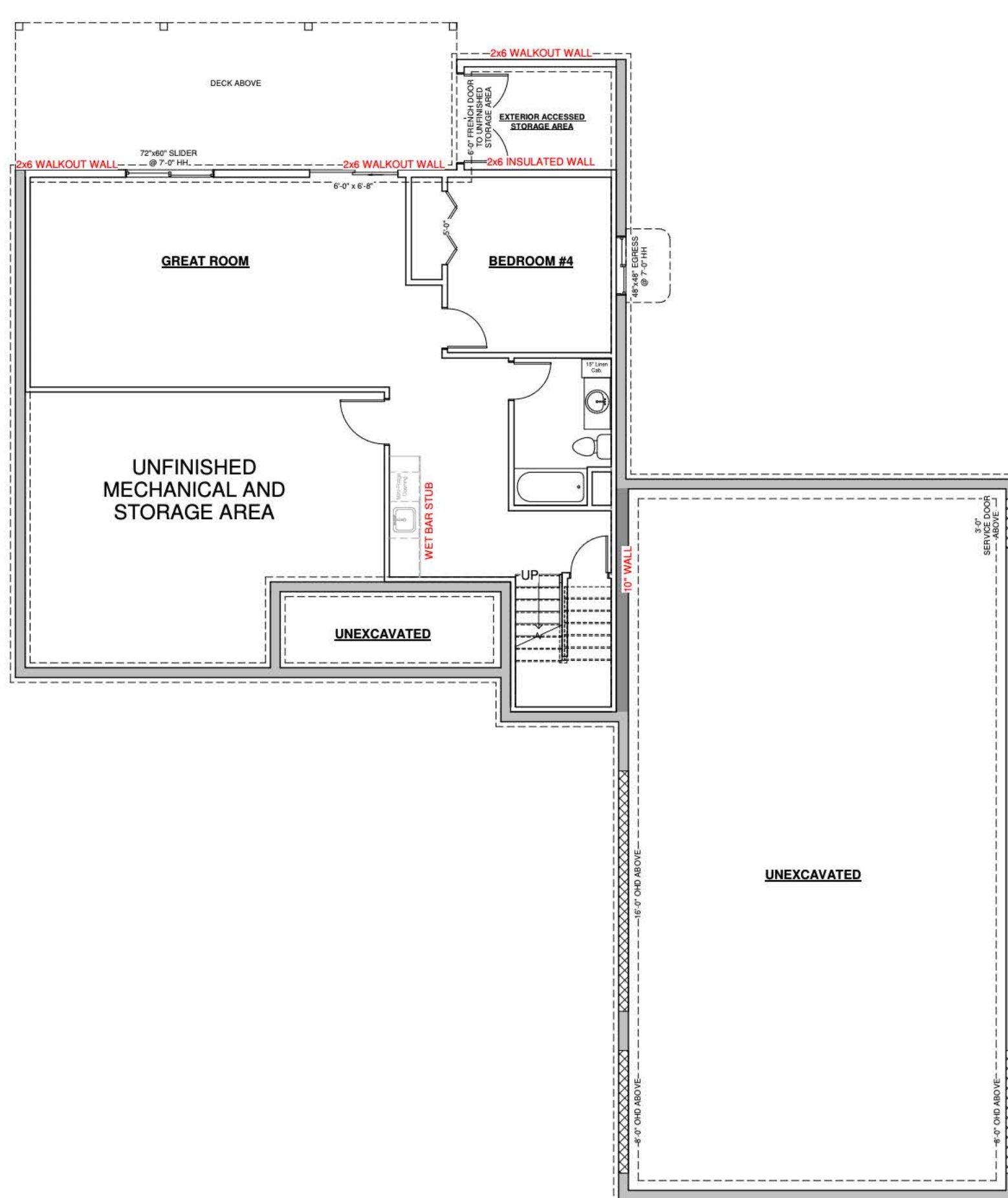
Project Address/Name	Custom
Date	REVIEW 06/28/2023
Drawn by	Bit Architecture
Checked by	

A101

This floor plan is for informational purposes only. The details including but not limited to sizes and options are subject to change and should be independently verified by the buyer with the General Contractor.

Right Side Brain Designs
2405 6th Ave SW, Altoona
(515) 890-9951
www.RSBDesigns.com

Lower Level:

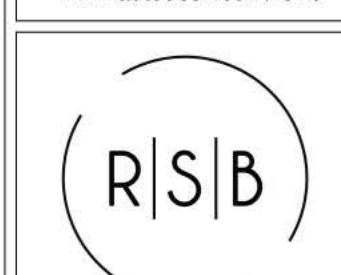


1450 + 615 LOFT
BARNDOMINIUM PROJECT

REVIEW MODE



www.autodesk.com/revit



RIGHT SIDE BRAIN
designs

RSB Designs drawings, plans, etc. are the sole property of RSB Designs and may not be copied in whole or part, printed or otherwise disseminated without express written permission of RSB Designs.

Date	Description

RSB Designs
Davis & Reed

Elevations 2

Project Address/Name	Custom
Date	REVIEW 06/28/2023
Drawn by	Bit Architecture
Checked by	

A104

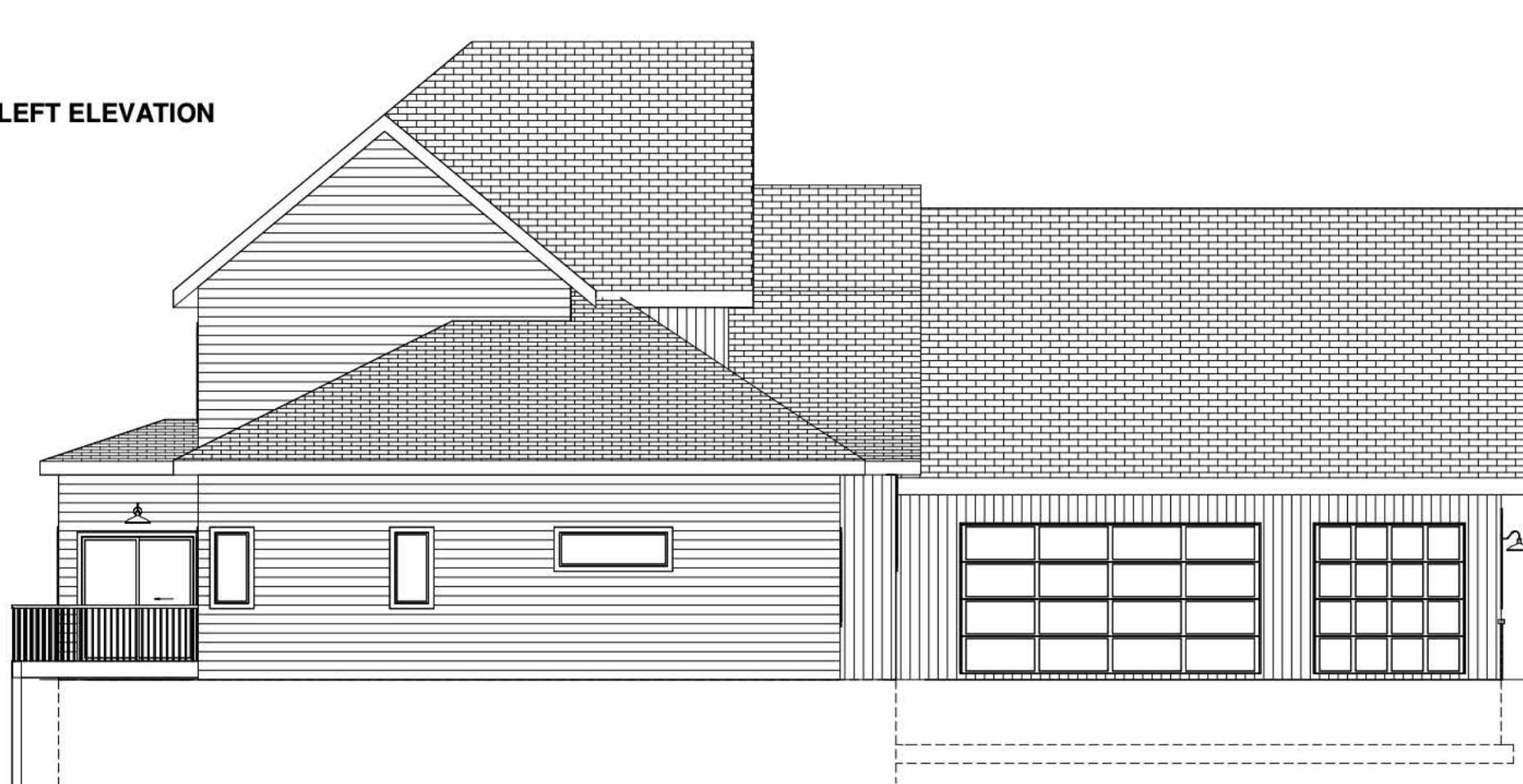
This floor plan is for informational purposes only. The details including but not limited to sizes and options are subject to change and should be independently verified by the buyer with the General Contractor.

Right Side Brain Designs
2405 6th Ave SW, Altoona
(515) 890-9951
www.RSBDesigns.com

RIGHT ELEVATION



LEFT ELEVATION

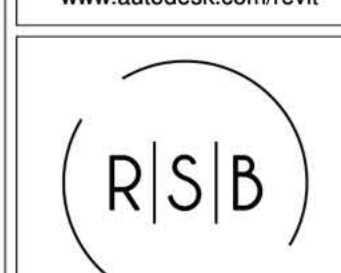


1450 + 615 LOFT
BARNDOMINIUM PROJECT

REVIEW MODE



www.autodesk.com/revit



RIGHT SIDE BRAIN
designs

RSB Designs drawings, plans, etc. are the sole property of RSB Designs and may not be copied in whole or part, printed or otherwise disseminated without express written permission of RSB Designs.

Date	Description

RSB Designs
Davis & Reed

Elevations

Project Address/Name	Custom
Date	REVIEW 06/28/2023
Drawn by	Bit Architecture
Checked by	

A100

This floor plan is for informational purposes only. The details including but not limited to sizes and options are subject to change and should be independently verified by the buyer with the General Contractor.

Right Side Brain Designs
2405 6th Ave SW, Altoona
(515) 890-9951
www.RSBDesigns.com

FRONT ELEVATION



REAR ELEVATION



DAVIS & REED HOMES

REVIEW MODE

8" (and one 10") x 8'-0" Poured Foundation Walls
2x6 x 9' Main Floor Exterior Walls
2x6 x 8' Upper Floor Exterior Walls