

 HOVER





FRONT ELEVATION



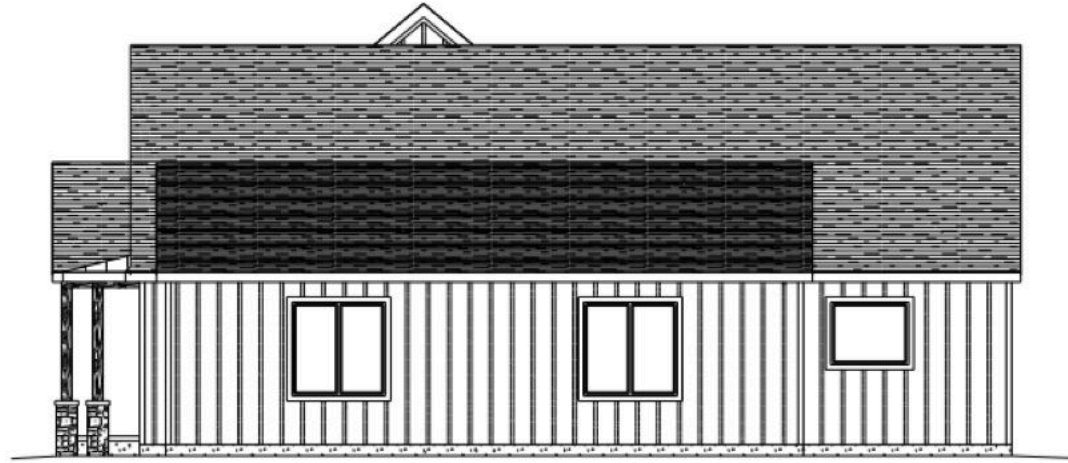
REAR ELEVATION

PLAN*	DATE	SCALE	1/4" = 1'
120712	8-25-2023	DRAWN BY	TYPE
SHEET	REVISED	APPROVED	
1 of 5			

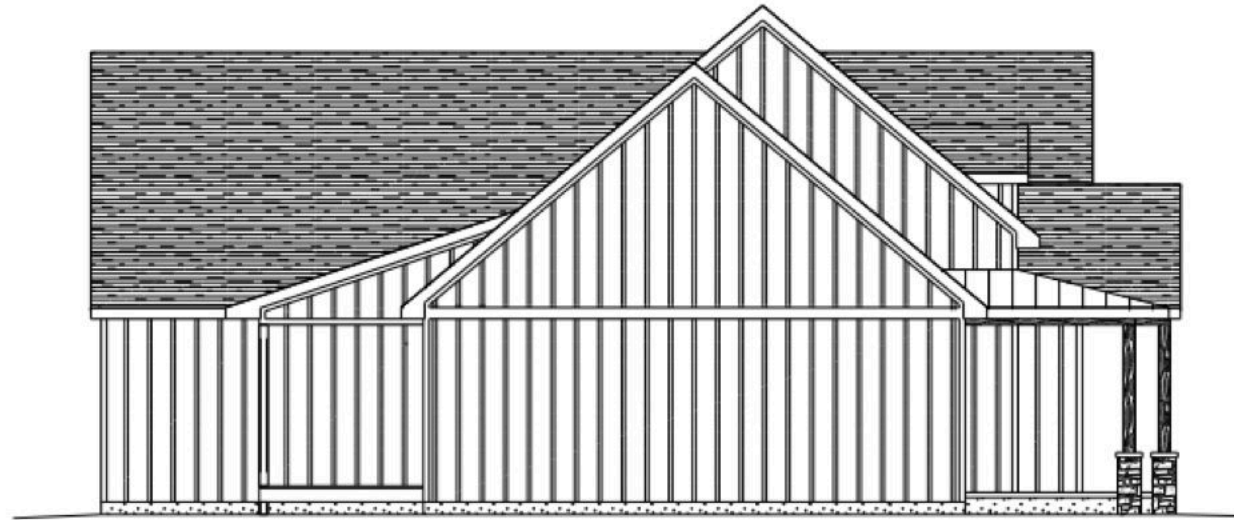
THIS DOCUMENT IS PREPARED BY THE ARCHITECT FOR THE ARCHITECT'S USE ONLY. IT IS NOT TO BE USED FOR ANY OTHER PURPOSE. THE ARCHITECT ASSUMES NO LIABILITY FOR ANY DAMAGE OR INJURY TO PERSONS OR PROPERTY CAUSED BY THE USE OF THIS DOCUMENT. THE ARCHITECT'S LIABILITY IS LIMITED TO THE PROFESSIONAL SERVICES PROVIDED. THE ARCHITECT'S LIABILITY DOES NOT EXTEND TO ANY OTHER MATTER. THE ARCHITECT'S LIABILITY IS LIMITED TO THE PROFESSIONAL SERVICES PROVIDED.

VP Design & Drafting, Inc.
515-249-1134





RIGHT ELEVATION



LEFT ELEVATION

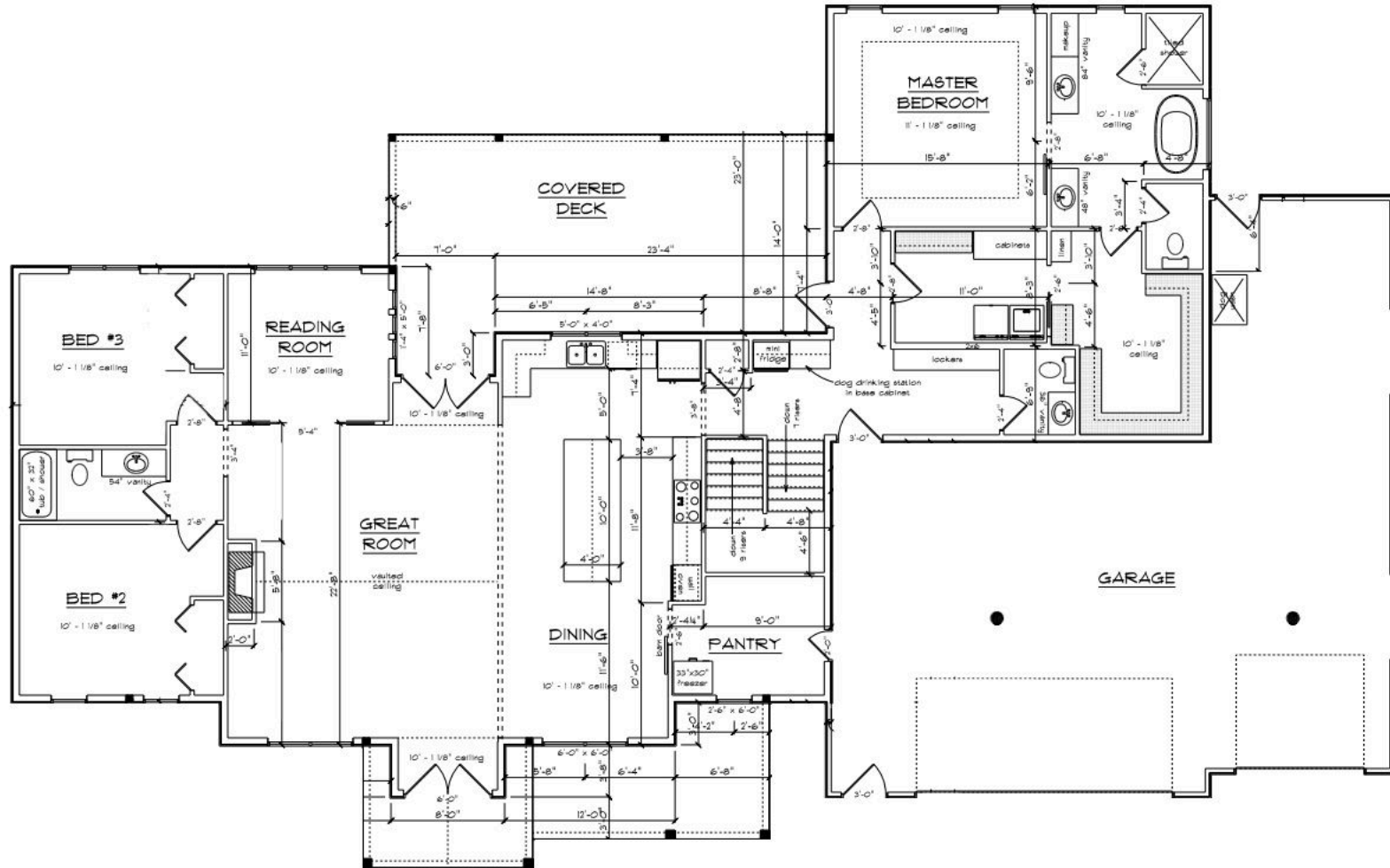
PLAN #	DATE	SCALE
D0072	6-25-2023	3/8" = 1'
SHEET	REVISED	DRAWN BY
4 of 5		APPROVED

VP DESIGN & DRAFTING, INC. IS AN EQUAL OPPORTUNITY AFFIRMATIVE ACTION EMPLOYER. WE DO NOT DISCRIMINATE ON THE BASIS OF RACE, GENDER, RELIGION, NATIONAL ORIGIN, ANCESTRY, COLOR, SEX, OR AGE. ALL RIGHTS RESERVED. © 2023 VP DESIGN & DRAFTING, INC. ALL RIGHTS RESERVED.

VP Design & Drafting, Inc.
515-249-1134

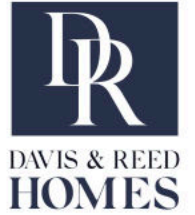


DAVIS & REED
HOMES



MAIN FLOOR PLAN

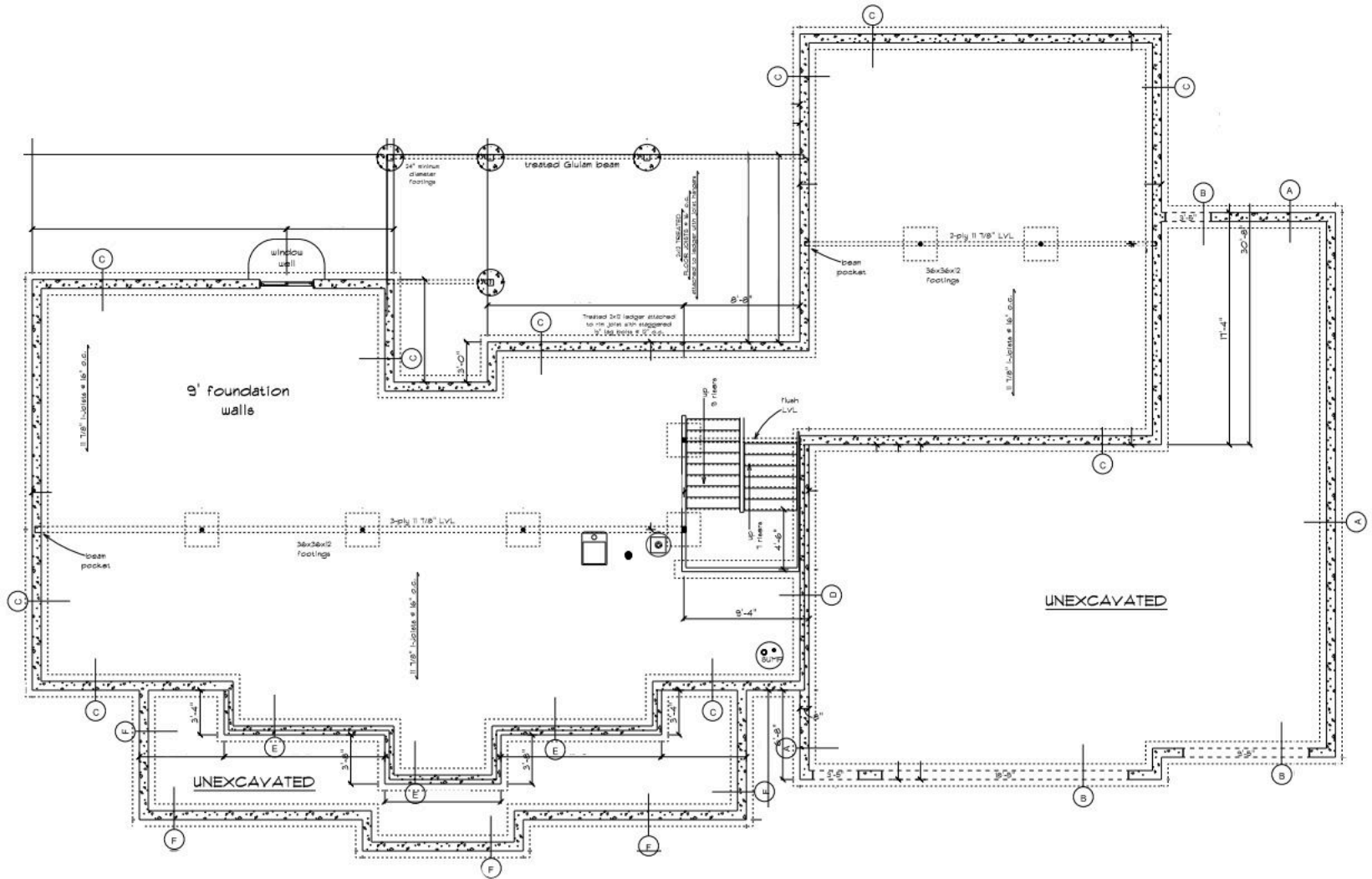
2555 6F



VP Design & Drafting, Inc.
515-249-1134

SCALE	1/4" = 1'	DATE	8-25-2023	PLAN #	12072
DRAWN BY	TYP	REVISED		SHEET	3 of 5
APPROVED					

FOR OWNER'S INFORMATION: THIS PLAN IS PREPARED BY AN ARCHITECTURAL FIRM AND IS NOT TO BE USED FOR CONSTRUCTION WITHOUT THE ARCHITECT'S SIGNATURE AND SEAL. THE ARCHITECT IS NOT RESPONSIBLE FOR ANY ERRORS OR OMISSIONS. THE ARCHITECT'S LIABILITY IS LIMITED TO THE DESIGN AND CONSTRUCTION OF THE PROJECT. THE ARCHITECT IS NOT RESPONSIBLE FOR ANY OTHER MATTERS. THE ARCHITECT'S LIABILITY IS LIMITED TO THE DESIGN AND CONSTRUCTION OF THE PROJECT.



FOUNDATION PLAN

SCALE	1/4" = 1'
DATE	8-25-02
PROJECT BY	TYP
APPROVED	
PLAN #	02072
SHEET	2 of 5

THESE DRAWINGS ARE THE PROPERTY OF DAVIS & REED HOMES, INC. NO PART OF THESE DRAWINGS IS TO BE REPRODUCED OR TRANSMITTED IN ANY FORM OR BY ANY MEANS, ELECTRONIC OR MECHANICAL, INCLUDING PHOTOCOPYING, RECORDING, OR BY ANY INFORMATION STORAGE AND RETRIEVAL SYSTEM, WITHOUT THE WRITTEN PERMISSION OF DAVIS & REED HOMES, INC.

VP Design & Drafting, Inc.
515-249-1134

