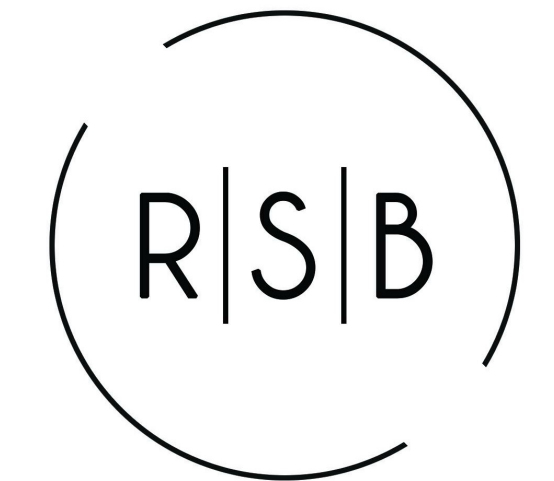


CONTEMPORARY CUSTOM RANCH



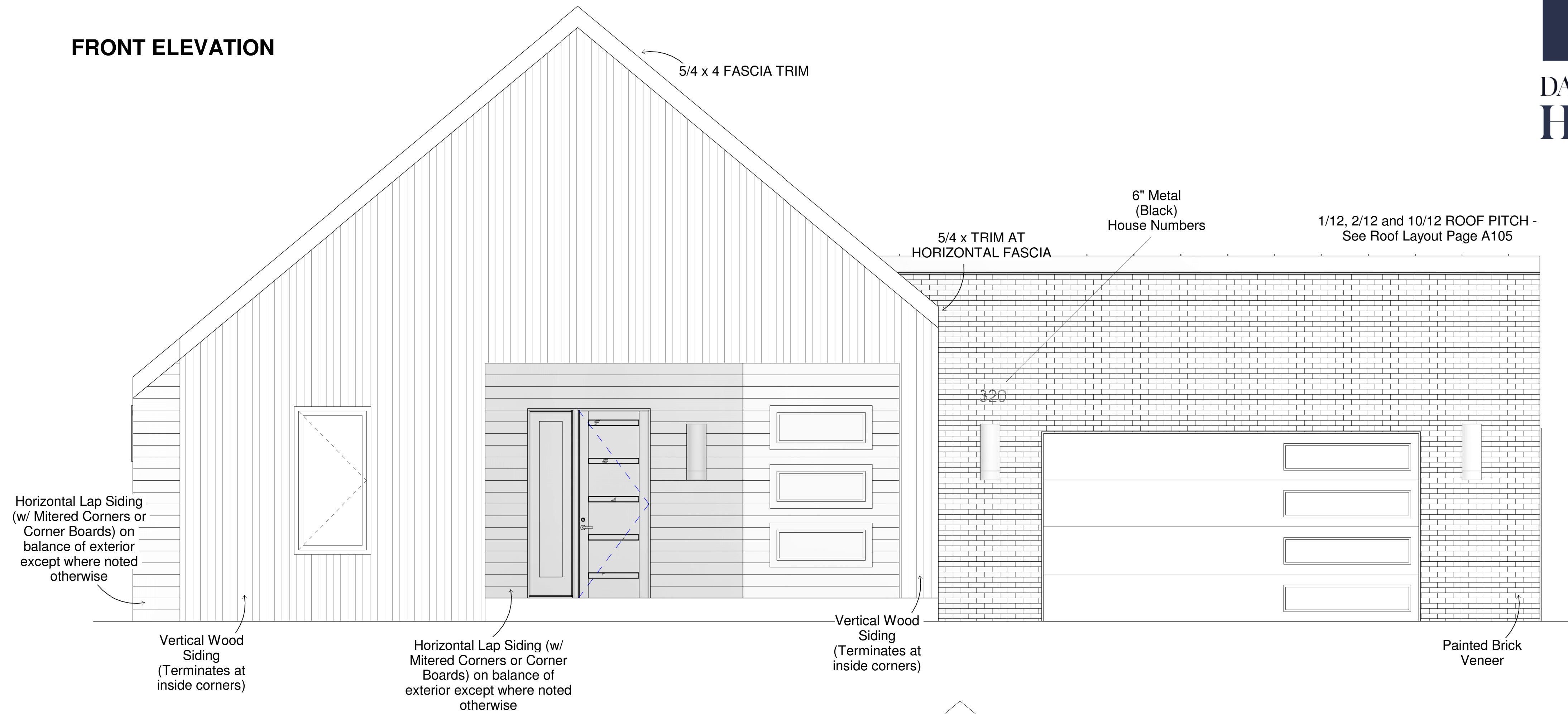
www.autodesk.com/revit



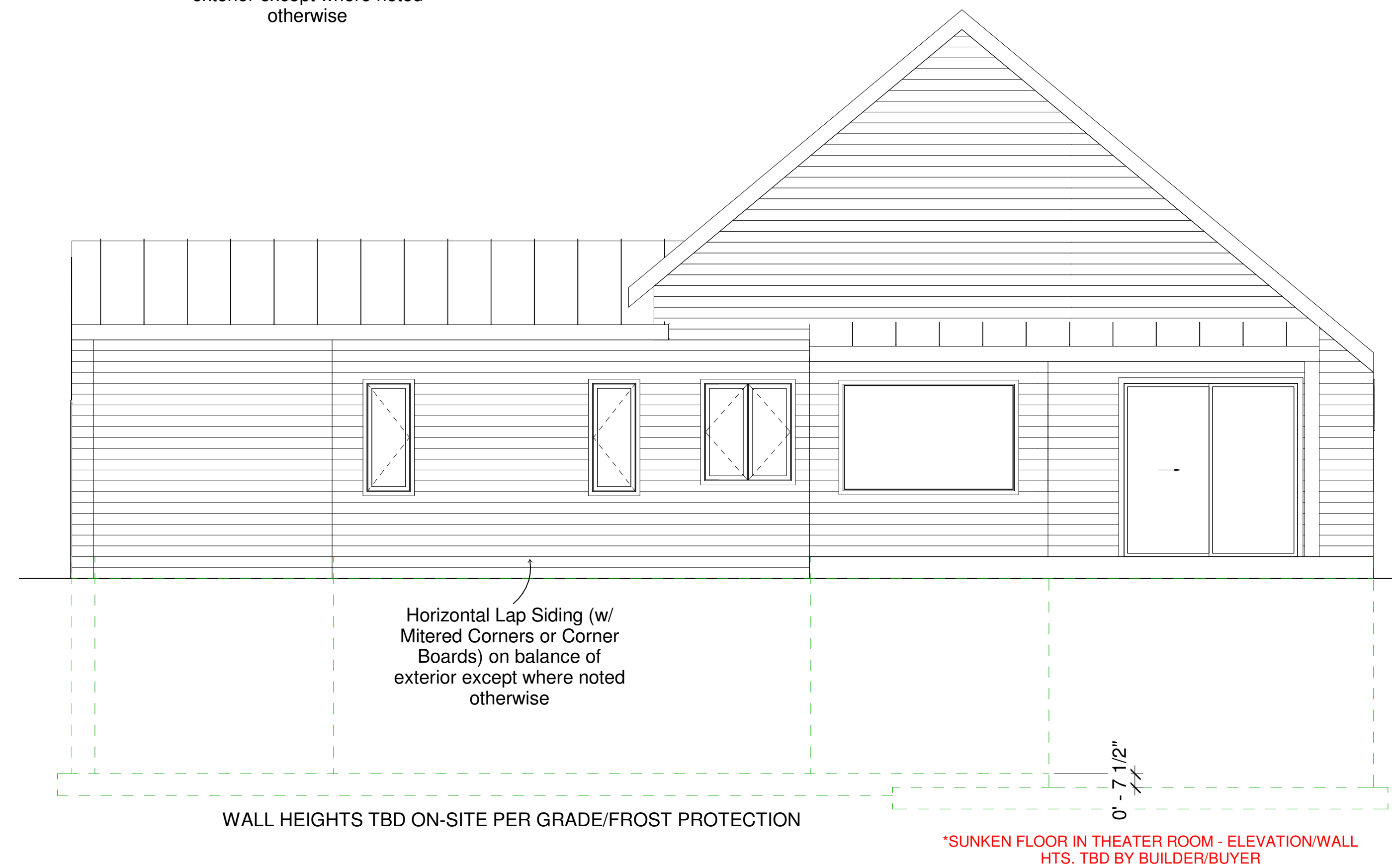
RIGHT SIDE BRAIN
designs

RSB Designs drawings, plans, etc. are the sole property of RSB Designs and may not be copied in whole or part, printed or otherwise disseminated without express written permission of RSB Designs.

FRONT ELEVATION



REAR ELEVATION



Date	Description
07/27/22	Draft 1
08/15/22	Draft 2
08/31/22	Draft 3

Square Footages	
Lower Level:	Approx. 1800 SF Finished
Main Level:	Approx. 2119 SF Finished
Garage:	Approx. 600 SF

RSB Designs Davis & Reed Homes Elevations

Project Address/Name	Contemporary Ranch
Date	Updated 08/31/2022
Drawn by	Britt Borcherding
Checked by	Checker

A101

Scale

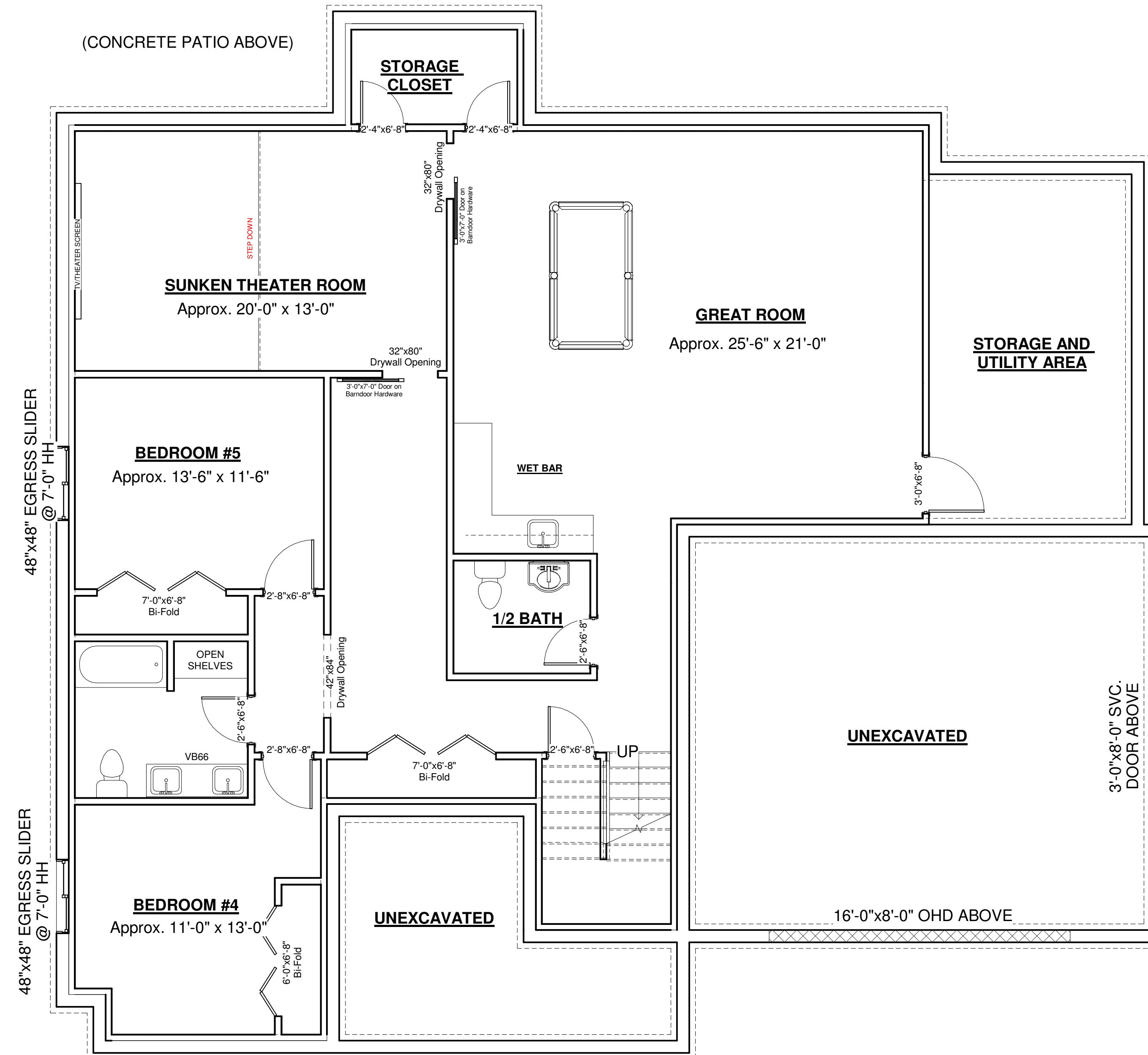
This floor plan is for informational purposes only. The details including but not limited to sizes and options are subject to change and should be independently verified by the buyer with the General Contractor.

Right Side Brain Designs
2405 6th Ave SW, Altoona
(515) 890-9951
www.RSBDesigns.com

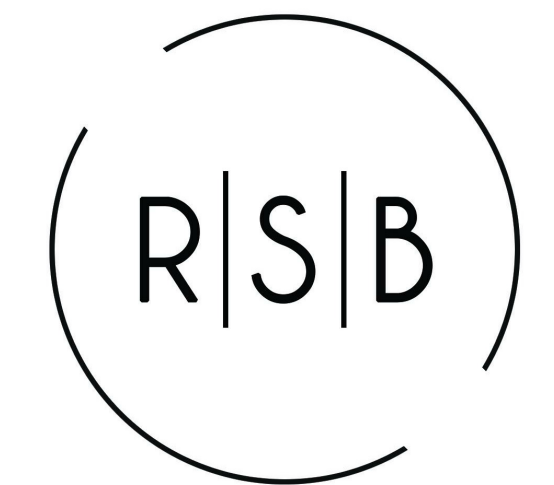
8" x 9' Full Foundation w/ Triple Plate
2x6 x 10' Main Floor Exterior Walls

CONTEMPORARY CUSTOM RANCH

Lower Level



www.autodesk.com/revit



RIGHT SIDE BRAIN
designs

RSB Designs drawings, plans, etc. are the sole property of RSB Designs and may not be copied in whole or part, printed or otherwise disseminated without express written permission of RSB Designs.

Date	Description
07/27/22	Draft 1
08/15/22	Draft 2
08/31/22	Draft 3

Square Footages	
Lower Level:	Approx. 1800 SF Finished
Main Level:	Approx. 2119 SF Finished
Garage:	Approx. 600 SF

RSB Designs
Davis & Reed Homes
Lower Level

Project Address/Name	Contemporary Ranch
Date	Updated 08/31/2022
Drawn by	Britt Borcharding
Checked by	Checker

A102

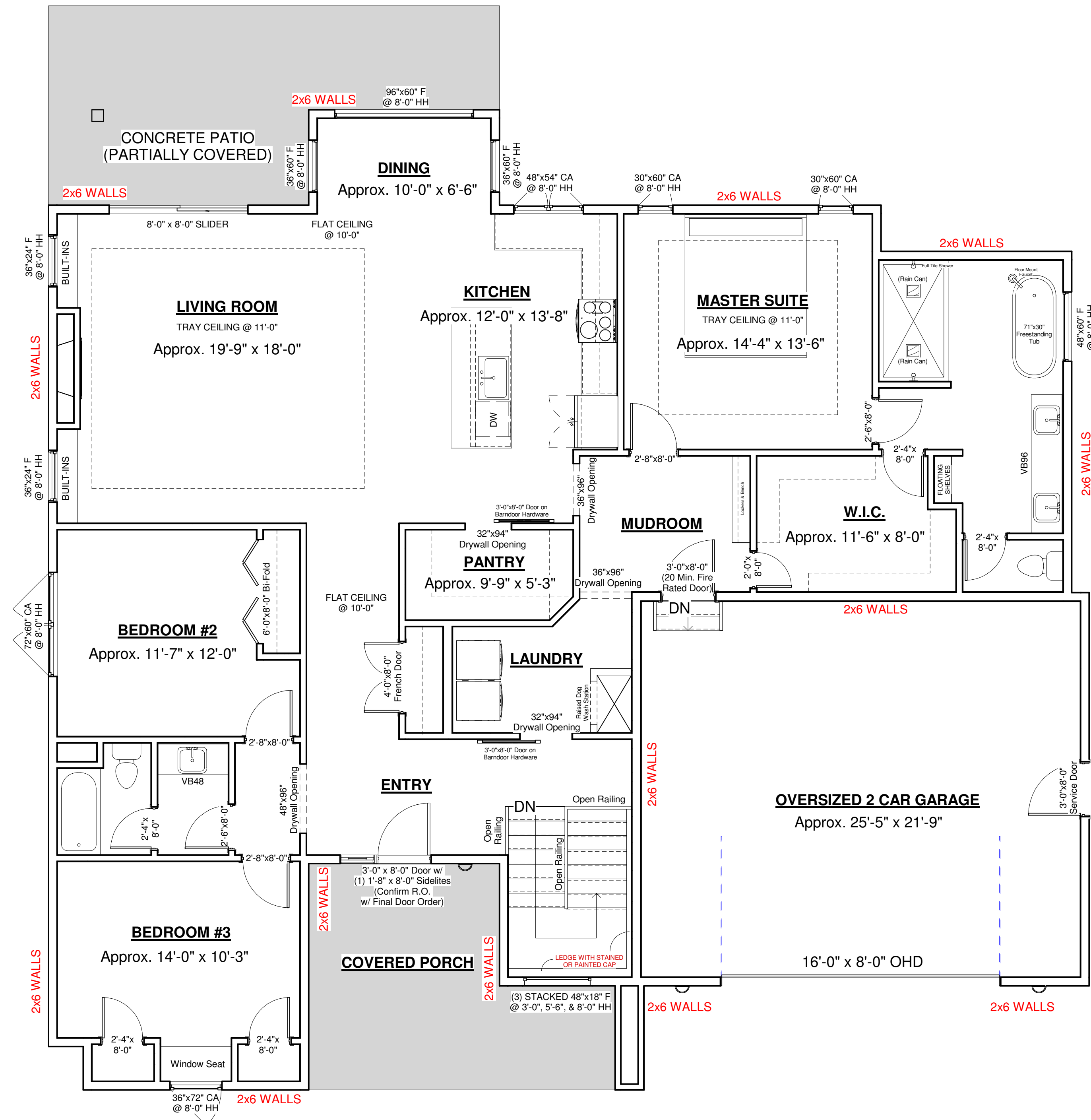
Scale

This floor plan is for informational purposes only. The details including but not limited to sizes and options are subject to change and should be independently verified by the buyer with the General Contractor.

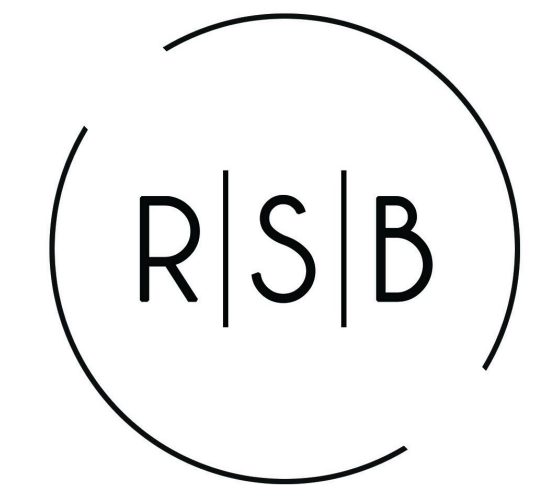
Right Side Brain Designs
2405 6th Ave SW, Altoona
(515) 890-9951
www.RSBDesigns.com

CONTEMPORARY CUSTOM RANCH

Main Level:



www.autodesk.com/revit



RIGHT SIDE BRAIN
designs

RSB Designs drawings, plans, etc. are the sole property of RSB Designs and may not be copied in whole or part, printed or otherwise disseminated without express written permission of RSB Designs.

Date	Description
07/27/22	Draft 1
08/15/22	Draft 2
08/31/22	Draft 3

Square Footages	
Lower Level:	Approx. 1800 SF Finished
Main Level:	Approx. 2119 SF Finished
Garage:	Approx. 600 SF

RSB Designs
Davis & Reed Homes
Main Level

Project Address/Name	Contemporary Ranch
Date	Updated 08/31/2022
Drawn by	Britt Borcharding
Checked by	Checker

A104

Scale

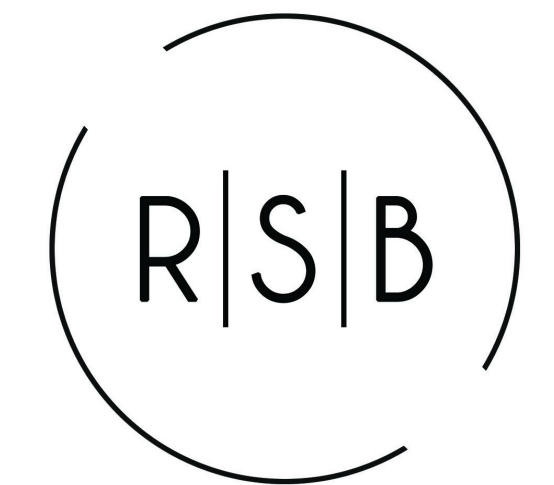
This floor plan is for informational purposes only. The details including but not limited to sizes and options are subject to change and should be independently verified by the buyer with the General Contractor.

Right Side Brain Designs
2405 6th Ave SW, Altoona
(515) 890-9951
www.RSBDesigns.com

CONTEMPORARY CUSTOM RANCH



www.autodesk.com/revit



RIGHT SIDE BRAIN
designs

RSB Designs drawings, plans, etc. are the sole property of RSB Designs and may not be copied in whole or part, printed or otherwise disseminated without express written permission of RSB Designs.

Date	Description
07/27/22	Draft 1
08/15/22	Draft 2
08/31/22	Draft 3

Square Footages	
Lower Level:	Approx. 1800 SF Finished
Main Level:	Approx. 2119 SF Finished
Garage:	Approx. 600 SF

RSB Designs Davis & Reed Homes Elevations 2

Project Address/Name	Contemporary Ranch
Date	Updated 08/31/2022
Drawn by	Britt Borcherding
Checked by	Checker

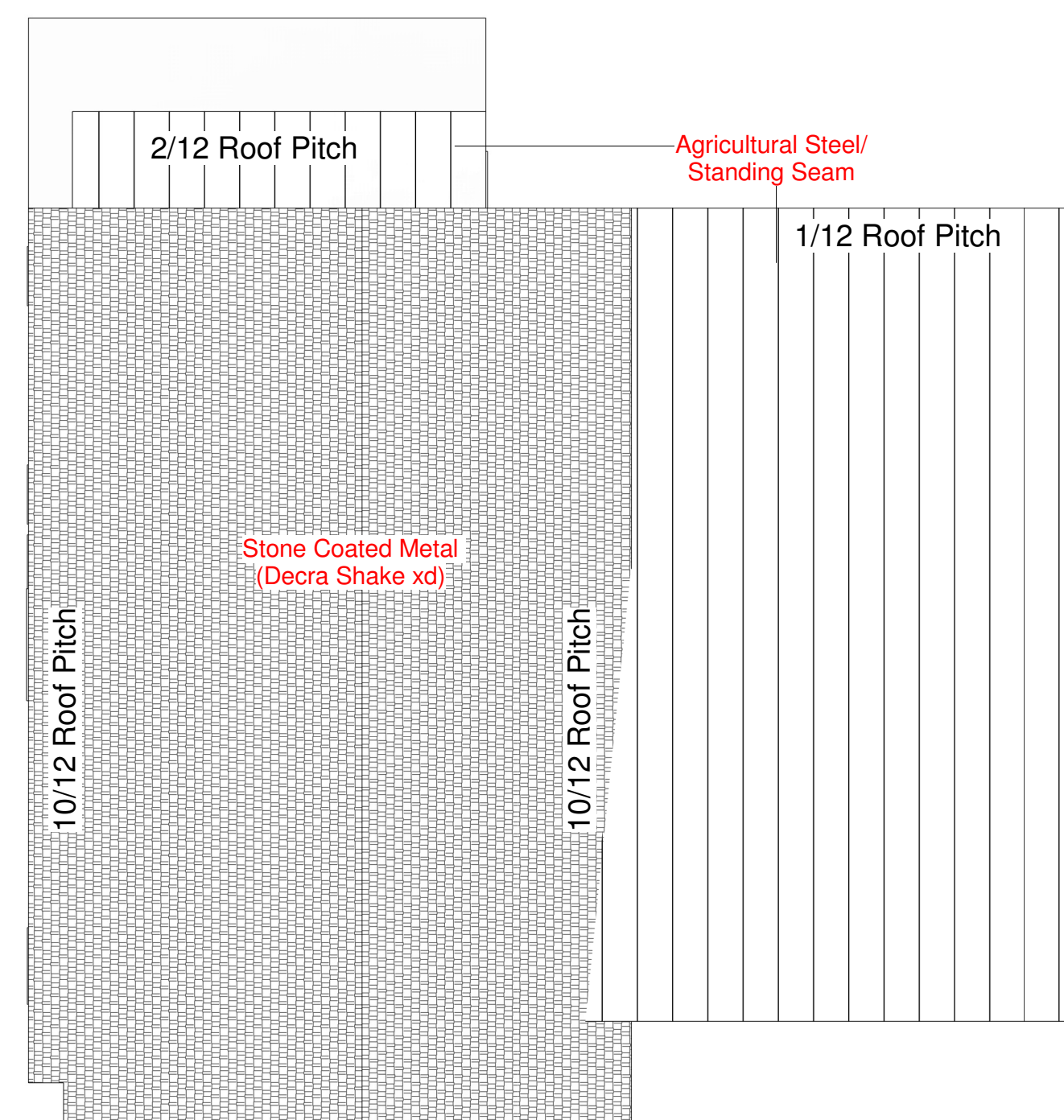
A105

Scale

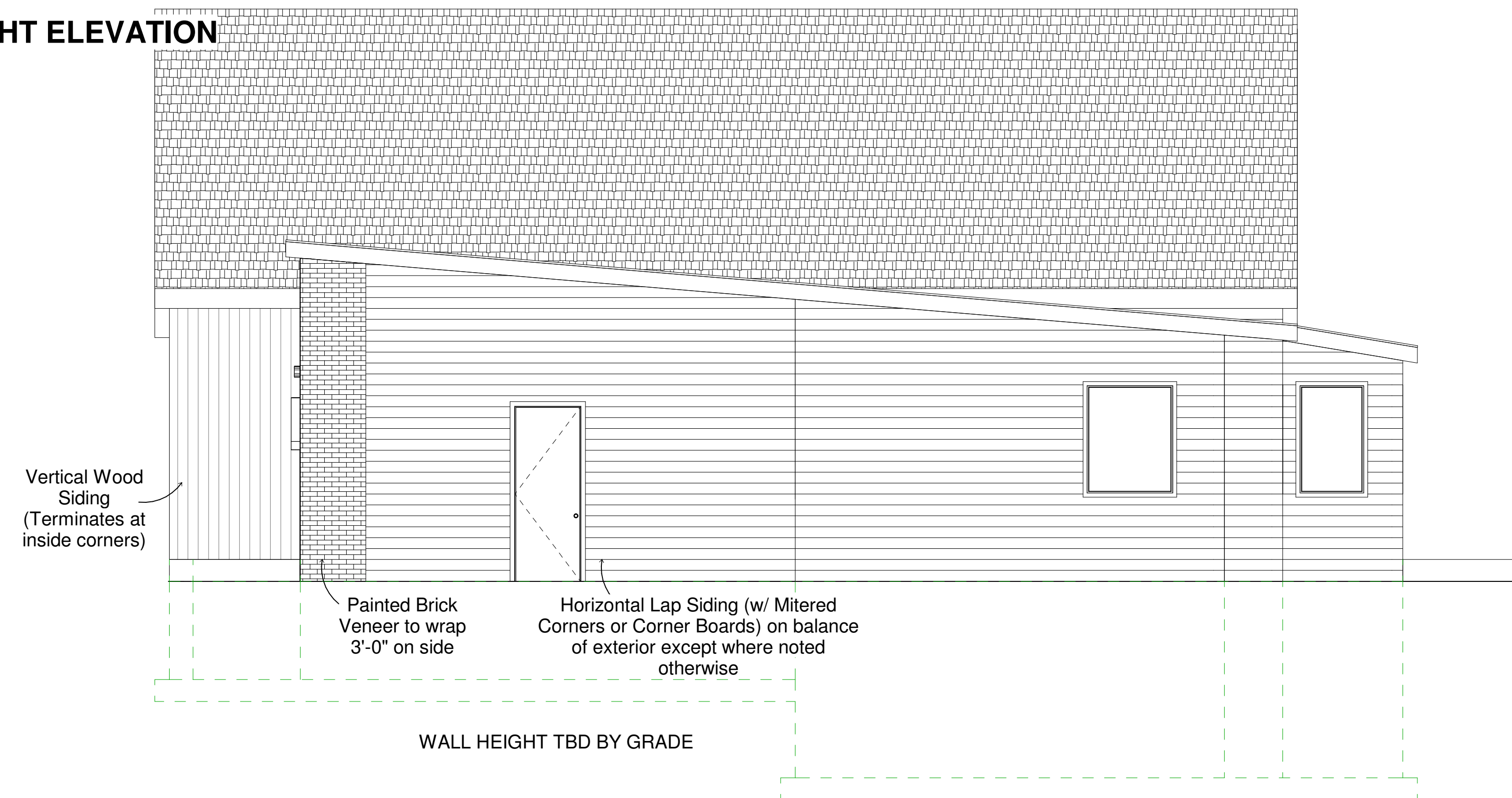
This floor plan is for informational purposes only. The details including but not limited to sizes and options are subject to change and should be independently verified by the buyer with the General Contractor.

Right Side Brain Designs
2405 6th Ave SW, Altoona
(515) 890-9951
www.RSBDesigns.com

Roof Layout:



RIGHT ELEVATION



LEFT ELEVATION

