

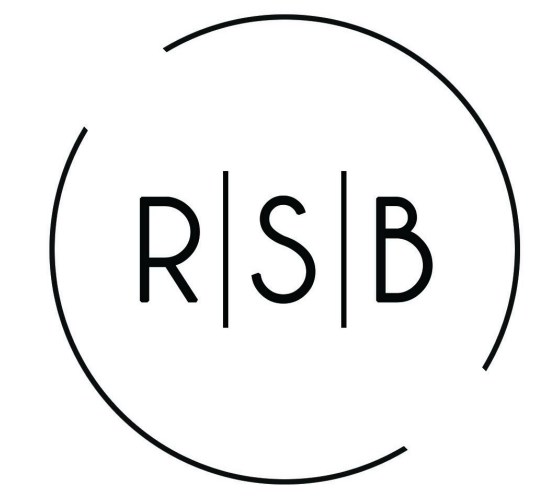
# 1348 BARNDOMINIUM PROJECT W/ CELLAR OFFICE

FRONT ELEVATION

# REVIEW MODE



www.autodesk.com/revit



RIGHT SIDE BRAIN  
*designs*

RSB Designs drawings, plans, etc. are the sole property of RSB Designs and may not be copied in whole or part, printed or otherwise disseminated without express written permission of RSB Designs.

| Date     | Description   |
|----------|---|
| 04/18/22 | Custom Barndo Project - Final   |
| 04/20/22 | Custom Barndo Project - Updated to 2x6 Exterior Walls/Framing, added Cellar and reduce SF overall |
| 06/08/22 | Custom Barndo Project - Removed Loft, New Office/Mudroom/Laundry layout                           |
| 07/06/22 | Custom Barndo Project - Relocate Office & revise Mudroom/Laundry/bath layout                      |

| Square Footages |                           |
|-----------------|---------------------------|
| Cellar:         | Approx. 204 SF UNFINISHED |
| Main Level:     | Approx. 1348 SF Finished  |
| Garage:         | Approx. 852 SF            |

## RSB Designs Barndo - 1348 sf Elevations

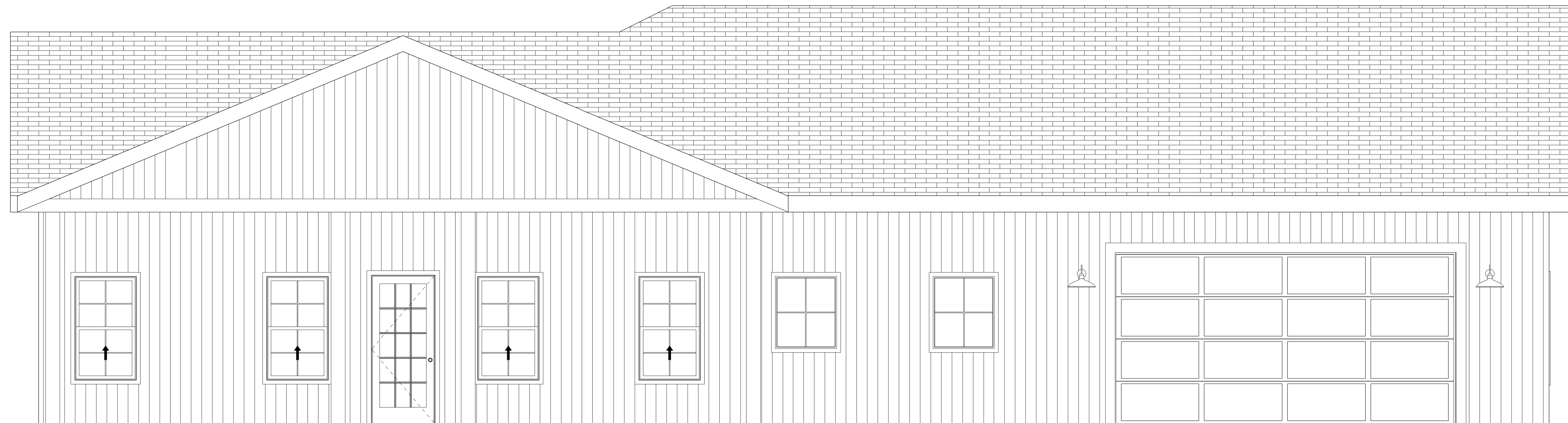
|                      |                           |
|----------------------|---------------------------|
| Project Address/Name | 1348 Barndo Cellar Office |
| Date                 | 09/08/22                  |
| Drawn by             | Britt Borcharding         |
| Checked by           | Checker                   |

A101

Scale 3/8" = 1'-0"

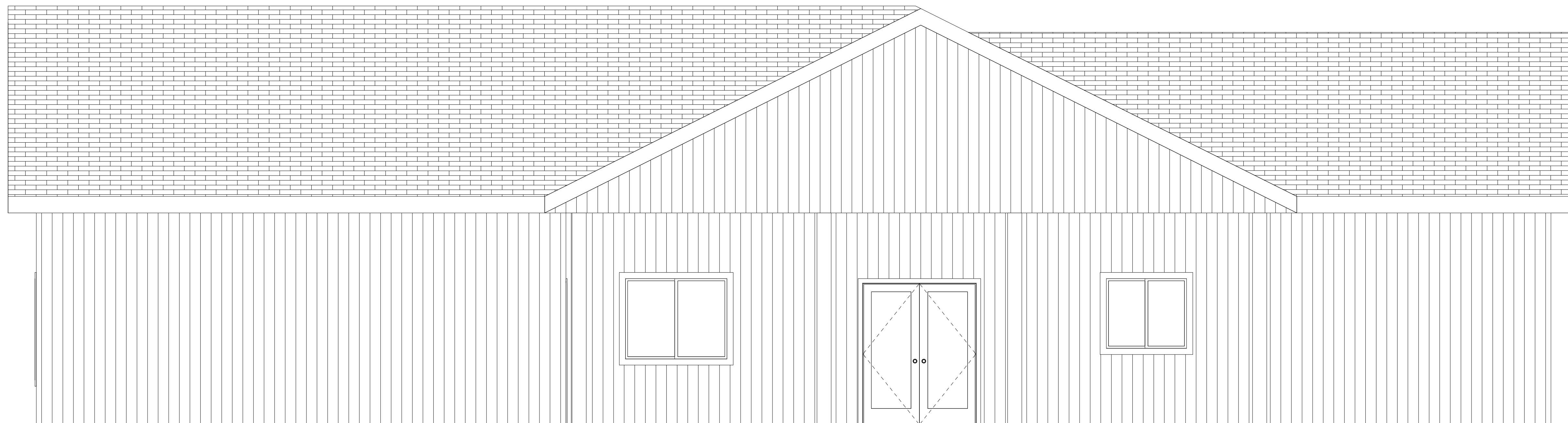
This floor plan is for informational purposes only. The details including but not limited to sizes and options are subject to change and should be independently verified by the buyer with the General Contractor.

Right Side Brain Designs  
2405 6th Ave SW, Altoona  
(515) 890-9951  
www.RSBDesigns.com



ENLARGED FOOTINGS - TBD PER ENGINEER/CONCRETE & FOOTING CONTRACTOR

## REAR ELEVATION



ENLARGED FOOTINGS - TBD PER ENGINEER/CONCRETE & FOOTING CONTRACTOR

OPTIONAL CELLAR SPACE



# 1348 BARNDOMINIUM PROJECT W/ CELLAR OFFICE

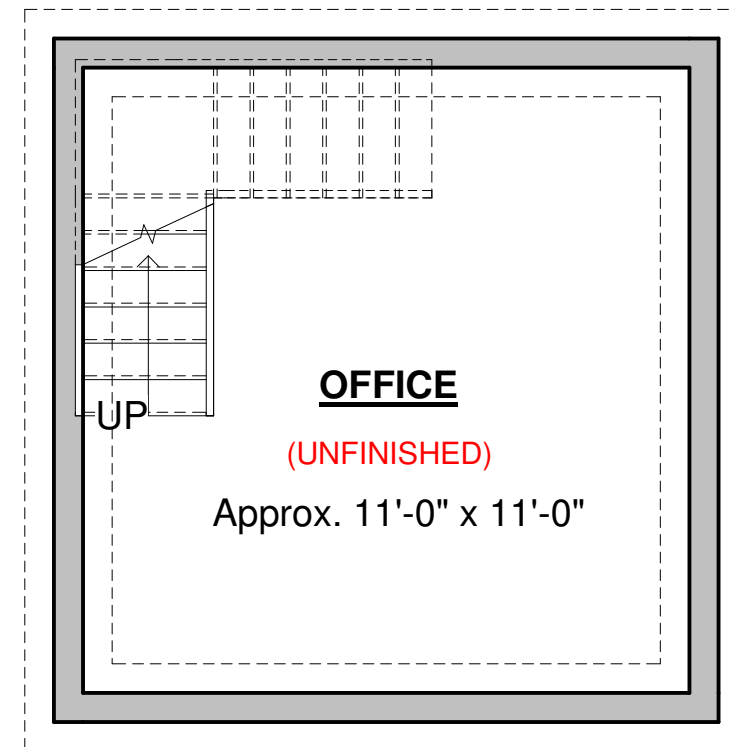
2x6 EXTERIOR WALLS, 2x4 INTERIOR EXCEPT WHERE NOTED

# REVIEW MODE

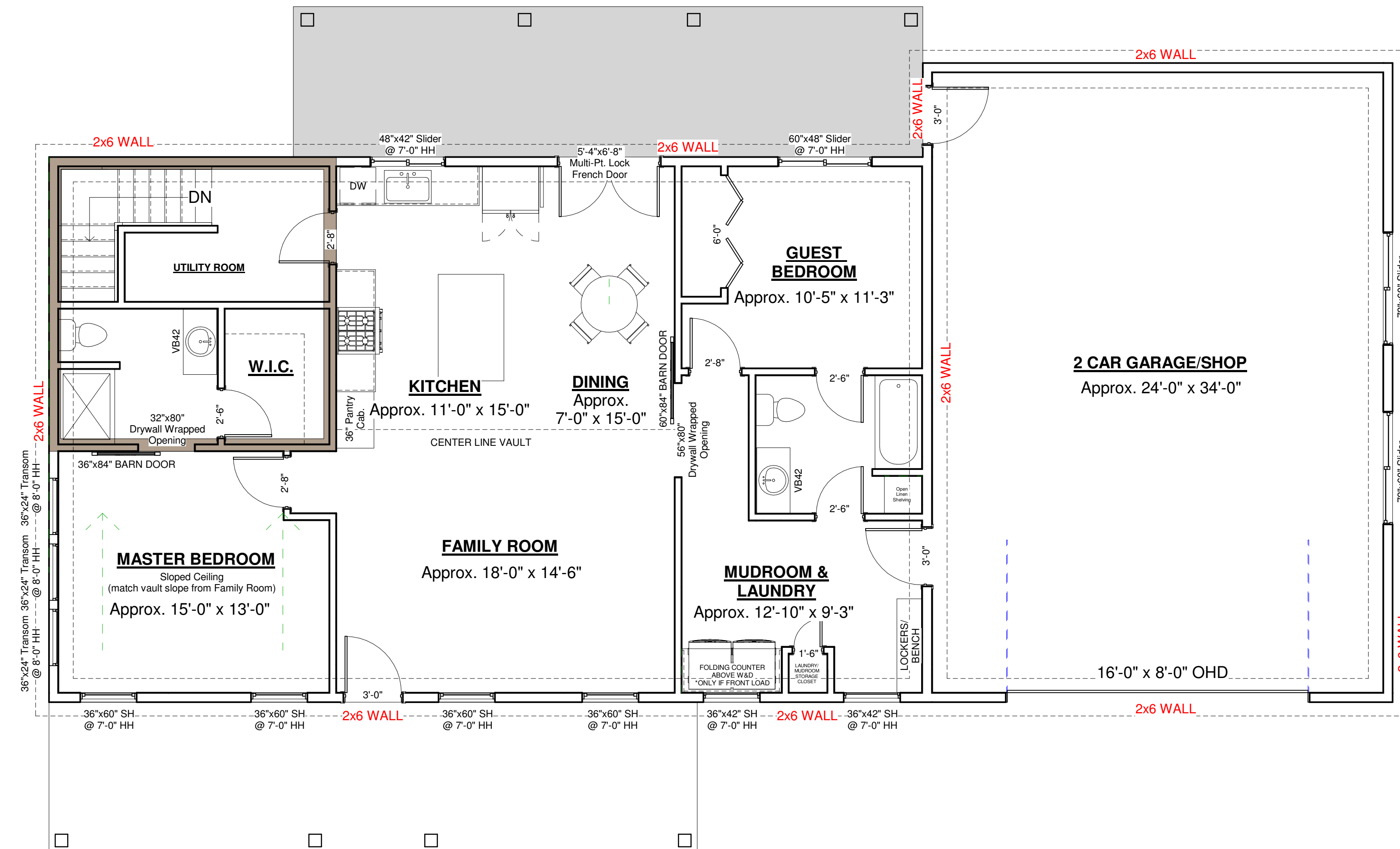


www.autodesk.com/revit

Optional Cellar Below (Floor Joists Above):



Main Level:



RIGHT SIDE BRAIN  
*designs*

RSB Designs drawings, plans, etc. are the sole property of RSB Designs and may not be copied in whole or part, printed or otherwise disseminated without express written permission of RSB Designs.

| Date     | Description  |
|----------|--|
| 04/18/22 | Custom Barndo Project - Final  |
| 04/20/22 | Custom Barndo Project - Updated to 2x6 Exterior Walls Framing, added Cellar, and reduce SF overall |
| 06/08/22 | Custom Barndo Project - Relocate Loft, New Office/Mudroom/Laundry layout                           |
| 07/06/22 | Custom Barndo Project - Relocate Office & revise Mudroom/Laundry bath layout                       |

| Square Footages |                           |
|-----------------|---------------------------|
| Cellar:         | Approx. 204 SF UNFINISHED |
| Main Level:     | Approx. 1348 SF Finished  |
| Garage:         | Approx. 852 SF            |

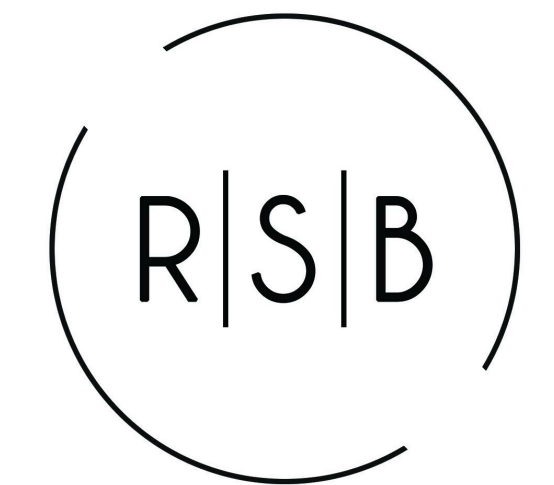
## RSB Designs Barndo - 1348 sf Main Level

|                      |                           |
|----------------------|---------------------------|
| Project Address/Name | 1348 Barndo Cellar Office |
| Date                 | 09/08/22                  |
| Drawn by             | Britt Borcharding         |
| Checked by           | Checker                   |

**A102**  
Scale 1/4" = 1'-0"

This floor plan is for informational purposes only. The details including but not limited to sizes and options are subject to change and should be independently verified by the buyer with the General Contractor.

Right Side Brain Designs  
2405 6th Ave SW, Altoona  
(515) 890-9951  
www.RSBDesigns.com



RIGHT SIDE BRAIN  
*designs*

RSB Designs drawings, plans, etc. are the sole property of RSB Designs and may not be copied in whole or part, printed or otherwise disseminated without express written permission of RSB Designs.

| Date     | Description   |
|----------|---|
| 04/18/22 | Custom Barndo Project - Final   |
| 04/20/22 | Custom Barndo Project - Updated to 2x6 Exterior Walls Framing, added Cellar and reduce SF overall |
| 06/08/22 | Custom Barndo Project - Removed Loft, New Office/Mudroom/Laundry layout                           |
| 07/06/22 | Custom Barndo Project - Relocate Office & revise Mudroom/Laundry/bath layout                      |

| Square Footages |                           |
|-----------------|---------------------------|
| Cellar:         | Approx. 204 SF UNFINISHED |
| Main Level:     | Approx. 1348 SF Finished  |
| Garage:         | Approx. 852 SF            |

**RSB Designs**  
**Barndo - 1348 sf**  
**Elevations 2**

|                      |                           |
|----------------------|---------------------------|
| Project Address/Name | 1348 Barndo Cellar Office |
| Date                 | 09/08/22                  |
| Drawn by             | Britt Borcherding         |
| Checked by           | Checker                   |

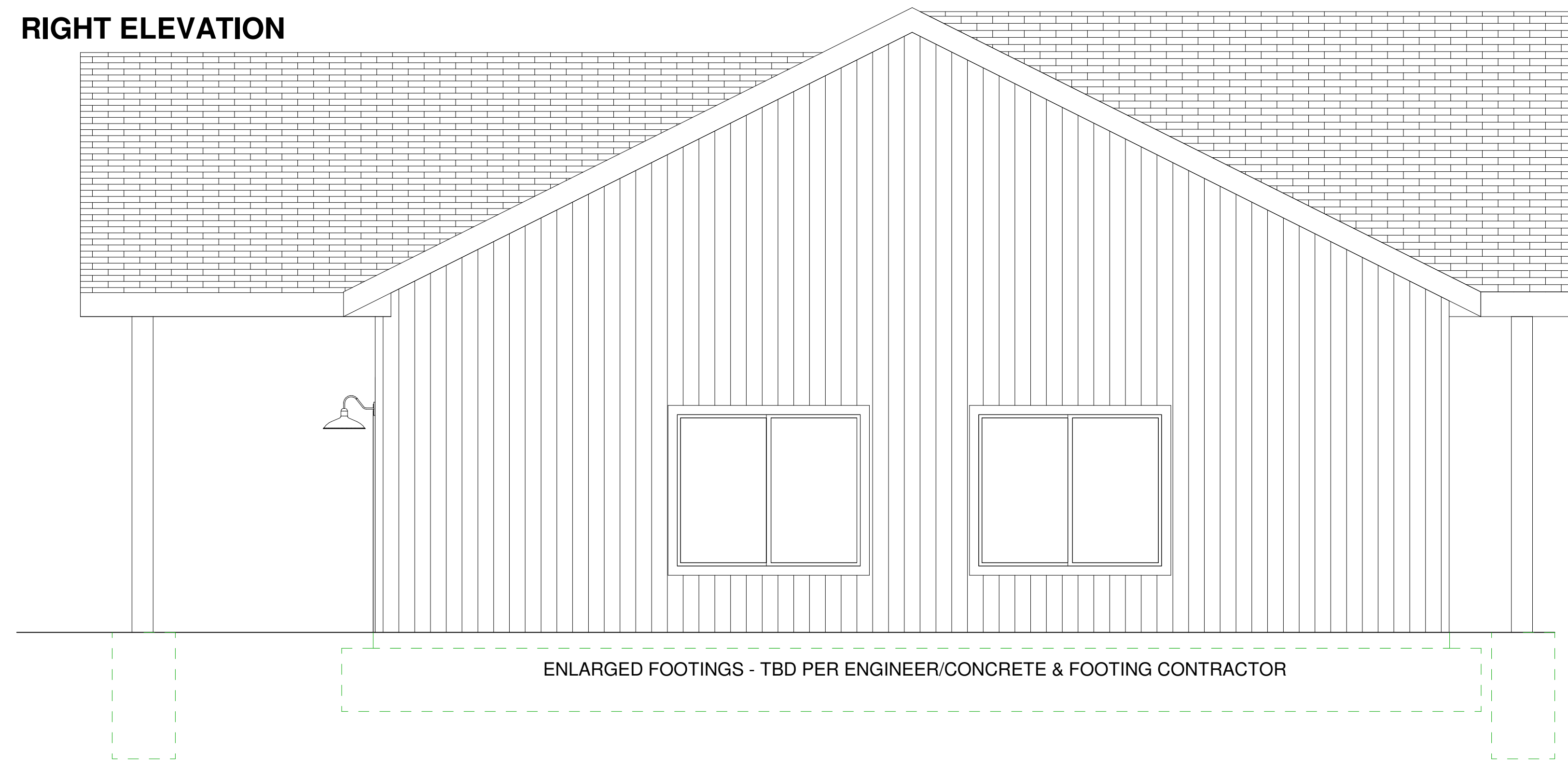
**A103**

|       |              |
|-------|--------------|
| Scale | 3/8" = 1'-0" |
|-------|--------------|

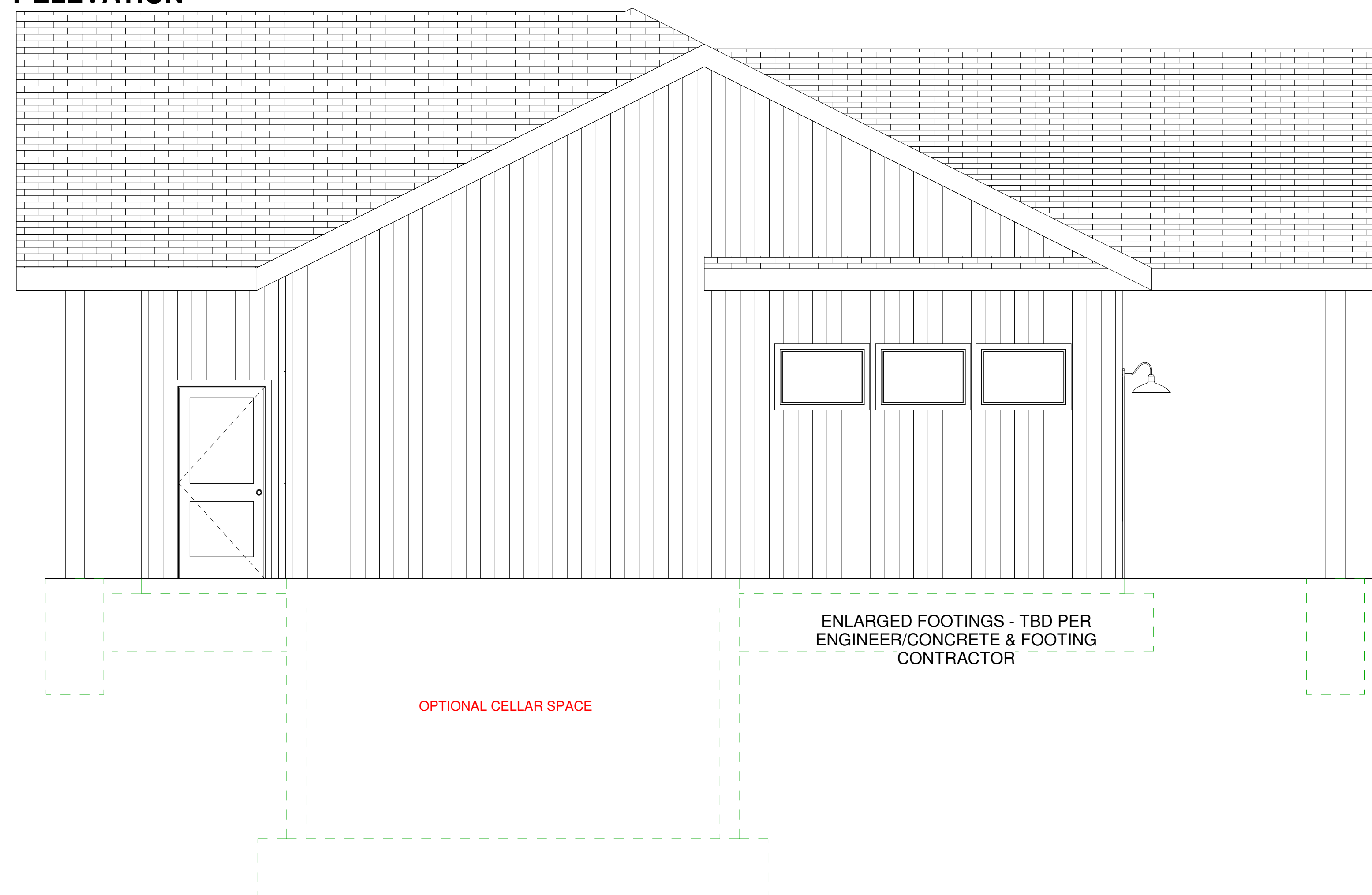
This floor plan is for informational purposes only. The details including but not limited to sizes and options are subject to change and should be independently verified by the buyer with the General Contractor.

Right Side Brain Designs  
2405 6th Ave SW, Altoona  
(515) 890-9951  
www.RSBDesigns.com

**RIGHT ELEVATION**



**LEFT ELEVATION**



**Roof Layout:**

