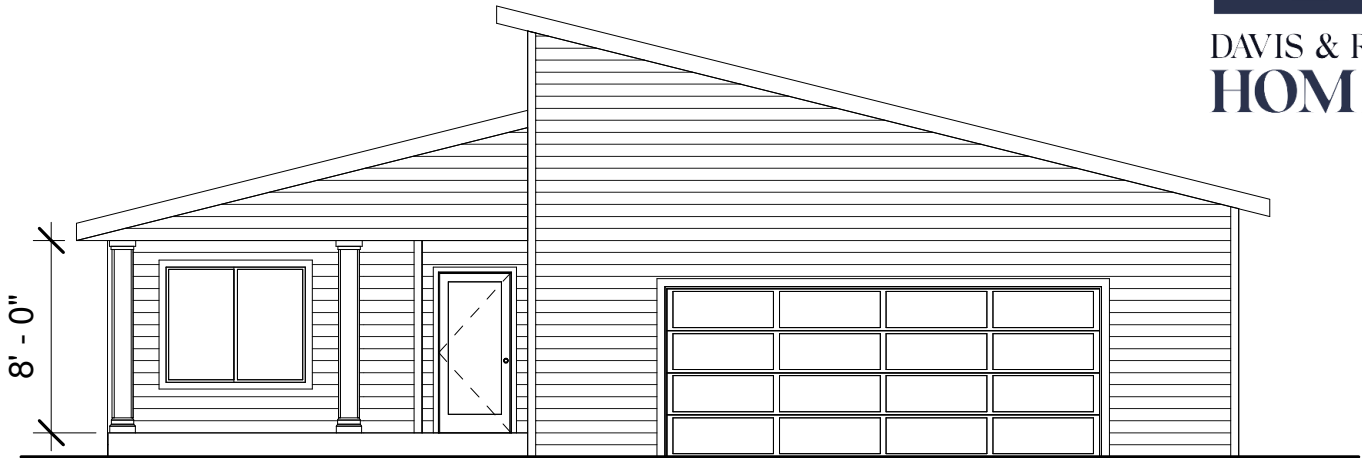


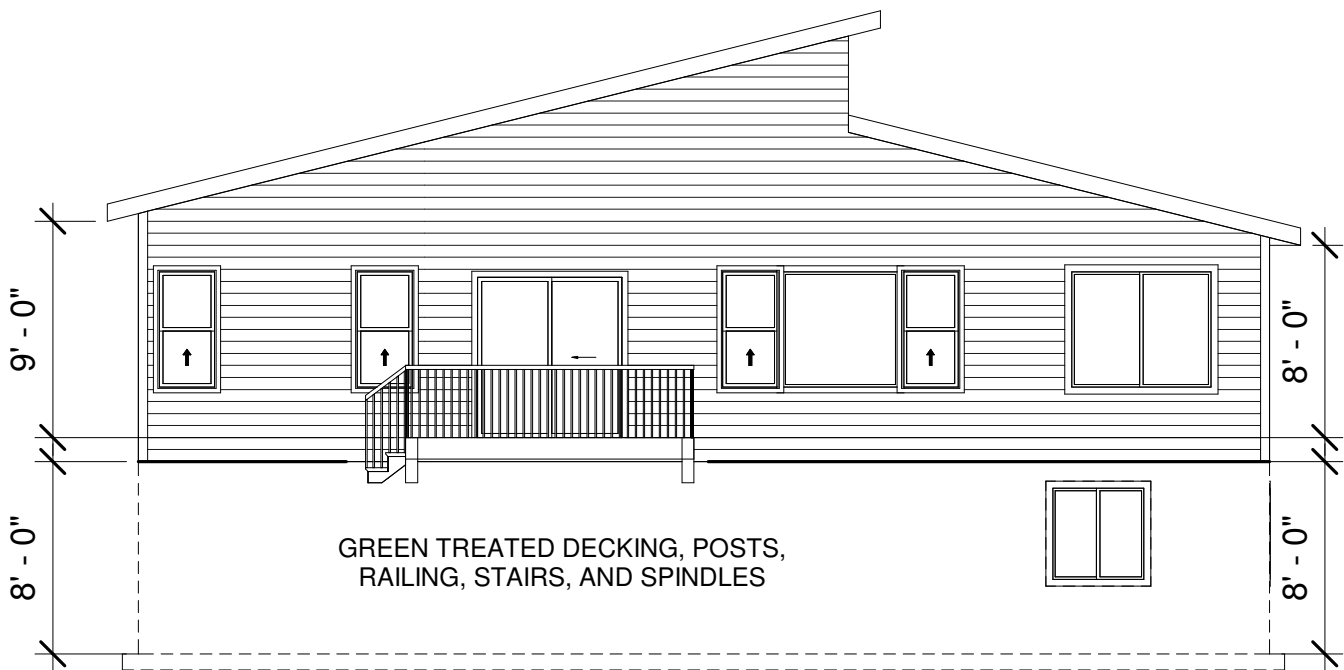
DAVIS & REED HOMES - 1280 SF RANCH



DAVIS & REED
HOMES



FRONT ELEVATION



REAR ELEVATION

8" x 8" Full Foundation
2x4 x 8' Main Floor Wall Construction
*(2x6 where noted)



RIGHT SIDE BRAIN
designs

This floor plan is for informational purposes only. The details including but not limited to sizes and options are subject to change and should be independently verified by the buyer with the General Contractor.



RSB Designs

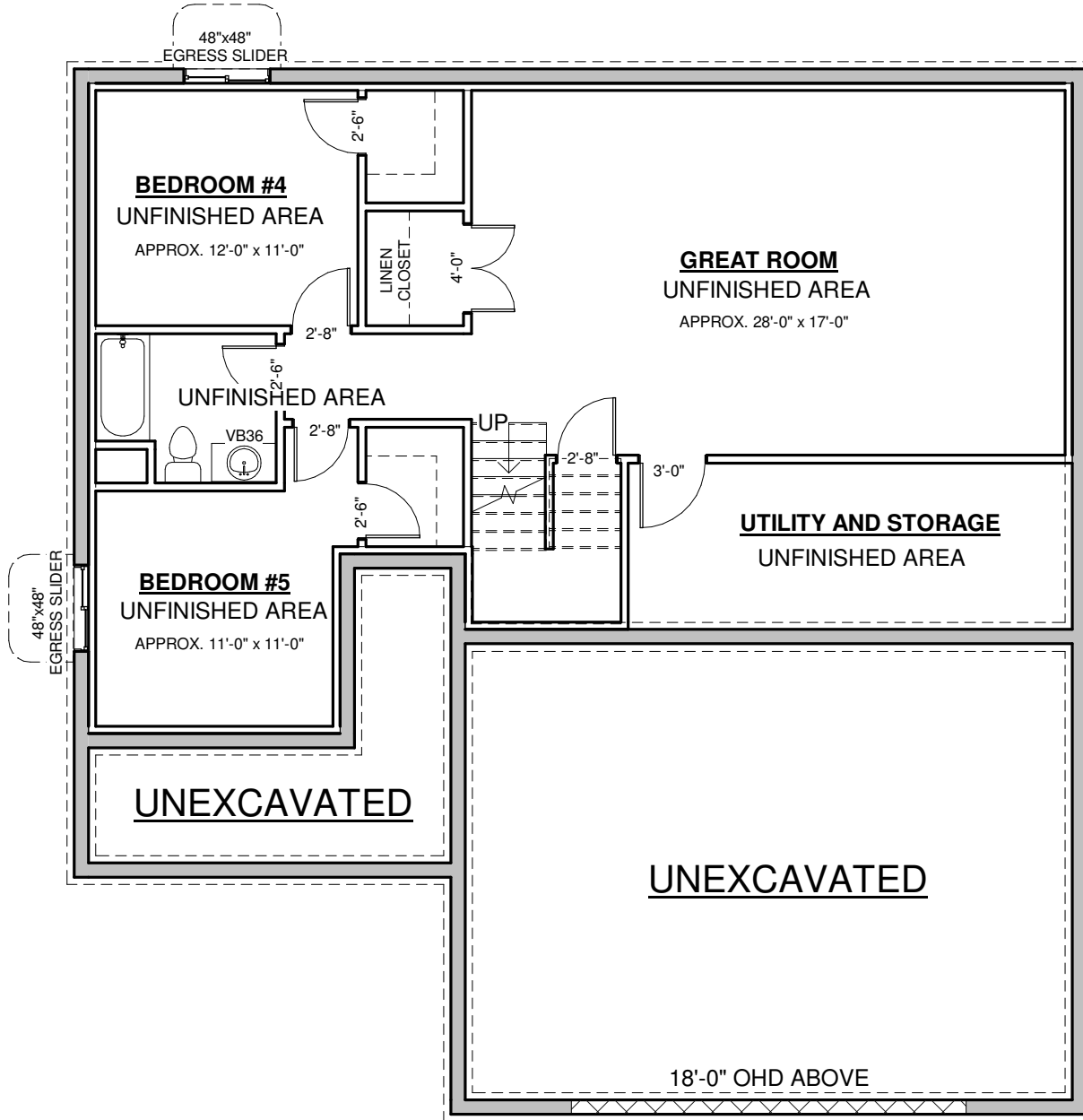
1280 RANCH

Elevations

REVIEW	
Project number	MODE
Date	09/23/2021
Drawn by	RSB Designs
Checked by	Brit Borcharding

A101

DAVIS & REED HOMES - 1280 SF RANCH



Lower Level



RIGHT SIDE BRAIN
designs

This floor plan is for informational purposes only. The details including but not limited to sizes and options are subject to change and should be independently verified by the buyer with the General Contractor.



RSB Designs

1280 RANCH

Lower Level

REVIEW

Project number MODE

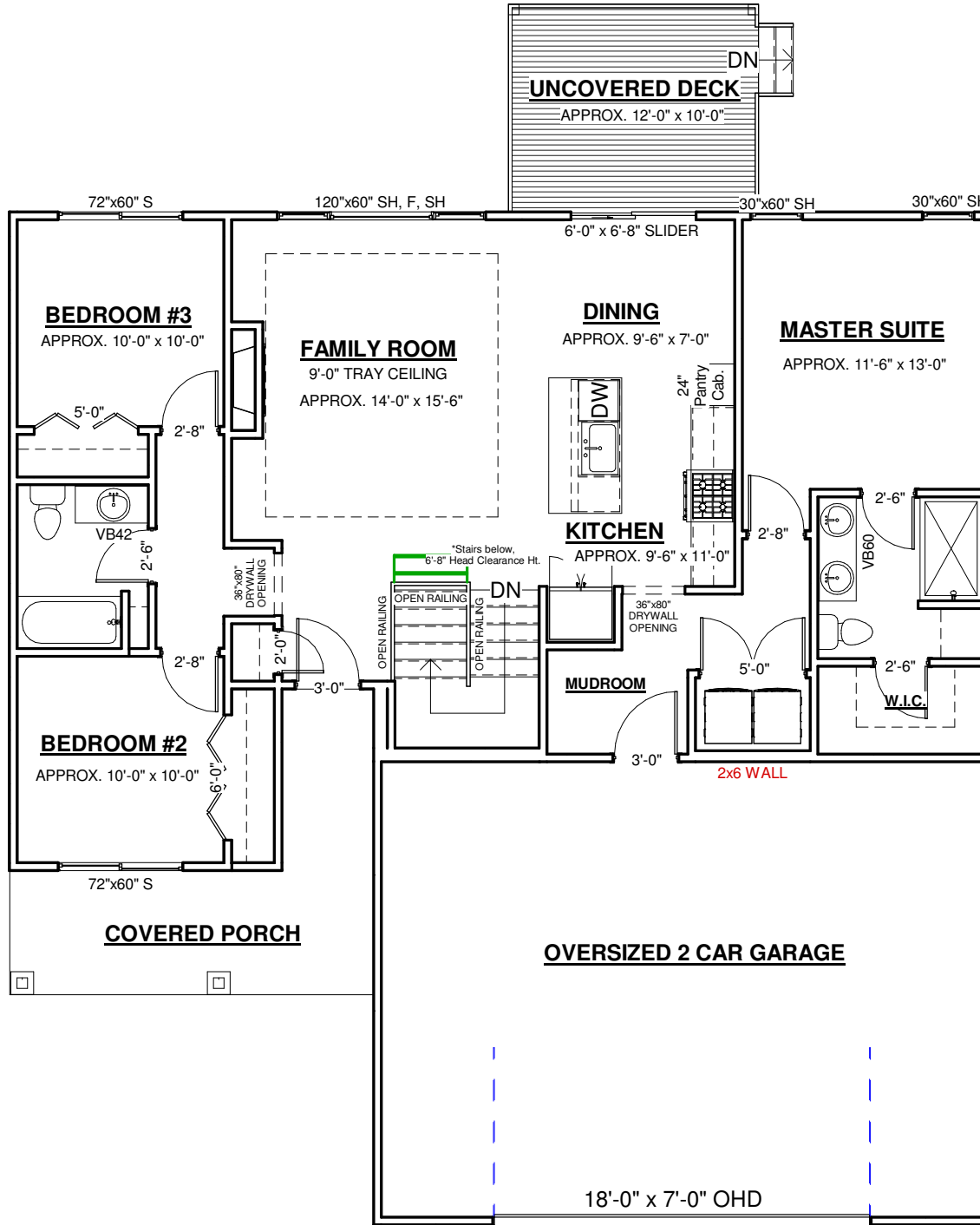
Date 09/23/2021

Drawn by Author

Checked by Checker

A102

DAVIS & REED HOMES - 1280 SF RANCH



Main Level



This floor plan is for informational purposes only. The details including but not limited to sizes and options are subject to change and should be independently verified by the buyer with the General Contractor.



RSB Designs

1280 RANCH

Main Level

REVIEW

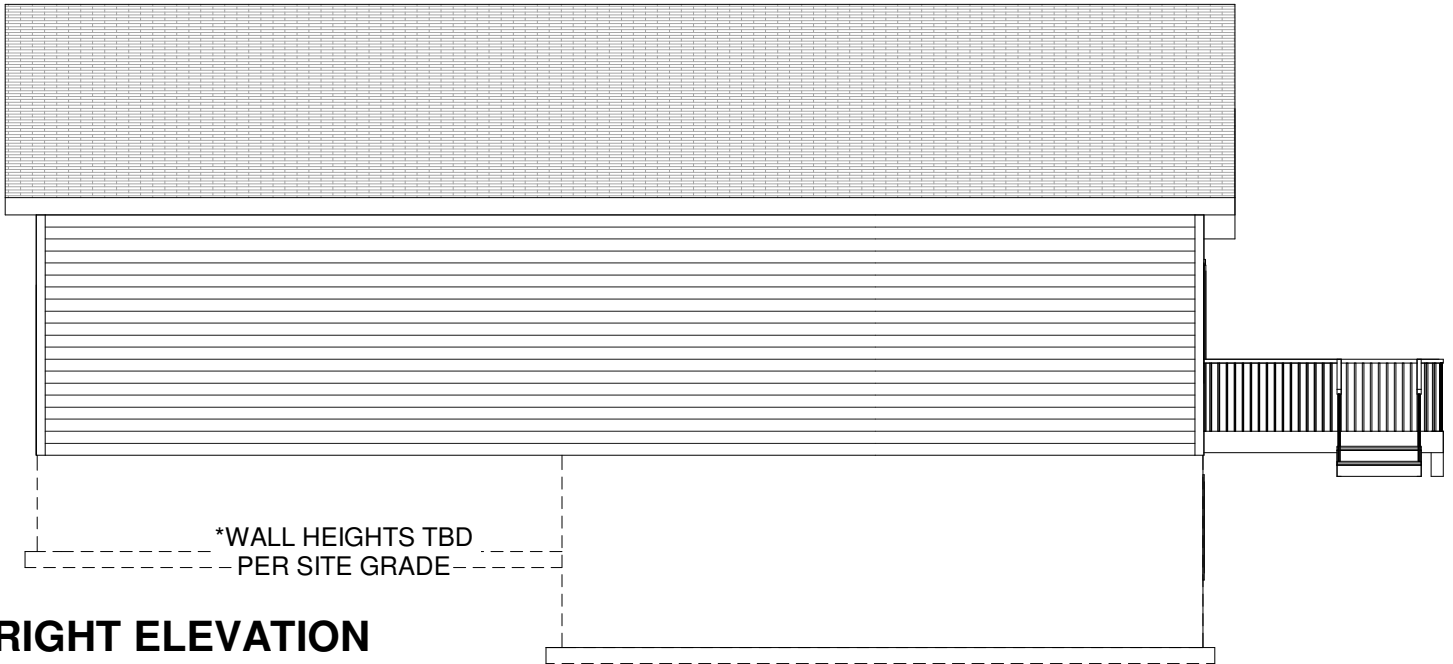
Project number	MODE
Date	09/23/2021
Drawn by	Author
Checked by	Checker

A103

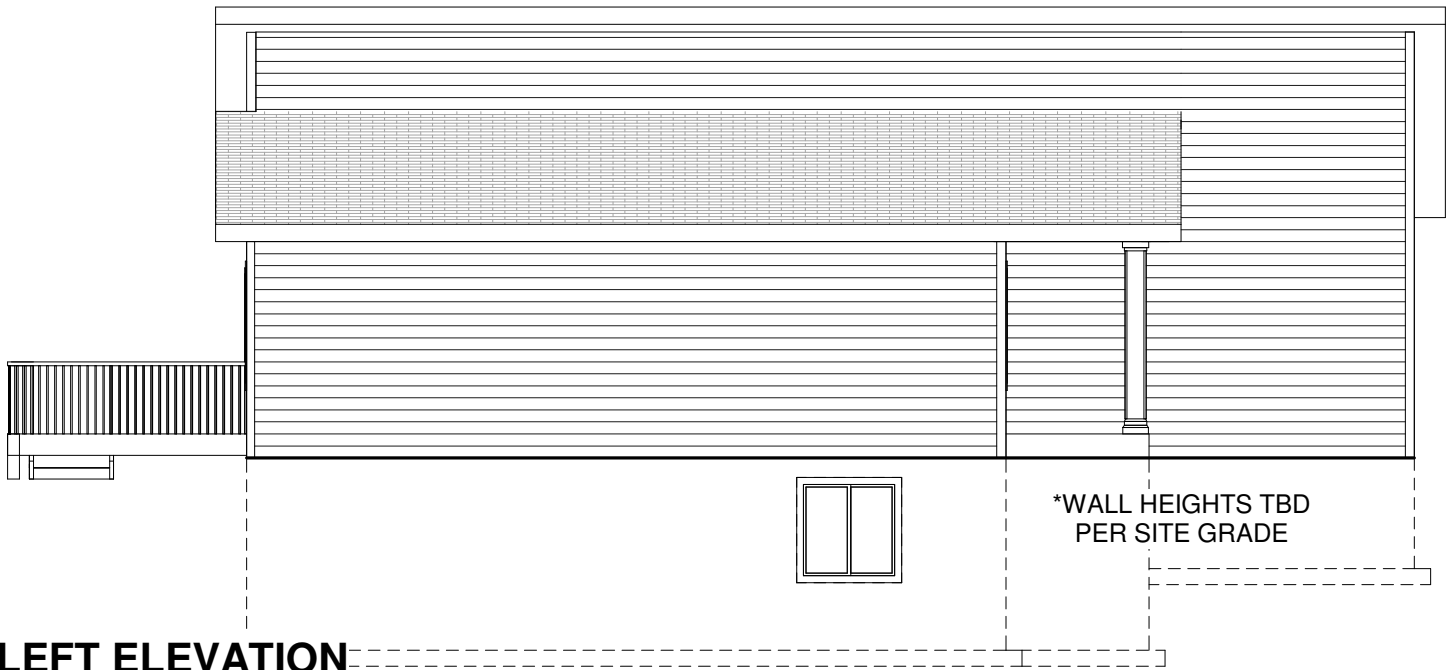
DAVIS & REED HOMES - 1280 SF RANCH



DAVIS & REED
HOMES



RIGHT ELEVATION



LEFT ELEVATION



This floor plan is for informational purposes only. The details including but not limited to sizes and options are subject to change and should be independently verified by the buyer with the General Contractor.



RSB Designs

1280 RANCH

Elevations 2

REVIEW

Project number	MODE
Date	09/23/2021
Drawn by	Author
Checked by	Checker

A104